



Spring-Summer 2021

In Motion



A publication of the New Hope Parks and Recreation Department

**New Hope
Aquatic
Park and
Aquatic Park
Employment**

Page 40



newhopemn.gov/rec

Table of Contents

V Some classes are offered in a virtual online setting. Look for this symbol to identify virtual classes.

Youth/Teen

- 10 Acting Camp
- 8 Amazing Athletes
- 10 Amusement Park Engineering
- 9 Athletic Associations
- 9 Babysitter's Training
- 4 Baseball
- 4 Beginning Sports-of-Sorts
- 13 Dance
- 6 Fencing
- 8 Flag Football
- 5 Golf League and Lessons
- 14 Gymnastics
- 12 KidCreate Art Studio
- 7 Lightsaber Sword Play
- 7 Martial Arts
- 10 Mega Machines
- 10 Minecraft
- 9 Musical Theater Camp
- 10 Planes, Trains and Automobiles
- 3 Playground Programs
- 7 Rev Sports Soccer
- 5 Rev Sports T-Ball/Baseball/Softball
- 9 Safe at Home
- 13 Safety Camp
- 11 Science Explorers
- 6 Skating Lessons
- 8 Soccer
- 23 Splatter Painting
- 7 Tennis Lessons
- 10 Three Rivers Programs
- 9 Wizard Masters

Sports Camps

- 18 Archery
- 16 Baseball
- 15 Basketball
- 19 Disc Golf
- 16 Fencing
- 16 Flag Football
- 18 Golf Camp
- 17 Gymnastics
- 18 Lacrosse
- 17 Major League Sports
- 17 Ninja Warriors
- 18 Quidditch
- 17 Skateboard

- 15 Soccer
- 19 Speed and Agility
- 19 Sports Extravaganza
- 19 Team Handball
- 16 Tennis
- 15 Track
- 16 Ultimate Frisbee
- 15 Volleyball

Parent + Child

- 20 Baseball
- 20 Golf Lessons
- 13 Gymnastics
- 21 KidCreate Art Studio
- 21 Music Together
- 20 Soccer
- 20 Three Rivers Programming

Special Events

- 22 Bike Rodeo
- 22 City Wide Garage Sale
- 26 HeyDay
- 23 Movies in the Park
- 23 Music in the Park
- 26 New Hope Summer Theatre
- 26 Plant Sale
- 26 Trick or Trot & Transylvania
- 22 Vehicle Fair
- 26 Wet and Wild Water Fun Day
- 22 Young Mudder

Families

- 27 Bandstand Bingo
- 27 Activity Packs
- 28 Storytime in the Park
- 27 Gnome Hunt
- 28 New Hope Farmer's Market
- 27 Paint in the Park
- 28 Starwatch
- 28 Step to It Challenge

Adults

- 34 Author Series
- 30 BBQ and Paint
- 25 Community Tripsters
- 32 Defensive Driving
- 34 Donut Make You Wonder
- 30 Financial Planning

- 33 Golf Leagues and Lessons
- 29 Kayaking
- 29 Pickleball Lessons
- 32 Softball Leagues and Tournament
- 31 Tennis Leagues and Lessons
- 29 Three Rivers Explorer Series
- 30 Women's Self-Defense

Outdoors

- 36 Disc Golf Course
- 36 Dog Parks
- 24 Parks Map and Amenities
- 36 Performance Center
- 37 Pickleball
- 36 Skate Park

Facilities

- 36 Ballfield Rental
- 39 Community Gym Rental
- 35 Disc Golf Course
- 38 Picnic Pavilion Rental
- 35 Off-Leash Dog Parks
- 24 Parks Map and Amenities

Aquatic Park

- 40 Hours and Admission
- 40 Lap Swimming/Water Walking
- 44 Lifeguard Certification
- 40 Party Rentals
- 44 Season Pass Application
- 41 Swim Club
- 41 Swimming Lessons

Golf Course

- 45 Clubhouse/Pavilion Rental
- 33 Golf Leagues/Lessons (Adult)
- 5 Golf Leagues/Lessons (Youth)
- 20 Golf Lessons (Parent/Child)
- 45 Open Golf

Registration

- 46 Registration Information/Form

Inclusion

- 48 Inclusion and Adaptive Rec

Contact Information

Parks and Recreation Office, 4401 Xylon Ave N
763.531.5151

New Hope Aquatic Park, 4411 Xylon Ave N
763-531-5177

New Hope Village Golf Course, 8130 Bass Lake Rd
763.531.5178

New Hope Ice Arena, 4949 Louisiana Ave N
763.531.5181

Community Gyms, 8230 47th Ave N
763.531.5155

Weather Cancellation Line (call after 4 p.m.)
763.531.5158

Susan Rader

Mark Severson

Aaron Thelen

Steve Ellingson

Matt Remore

Tony Portesan

Scott Stephan

Andrew Kramer

Penny Spitzer

Jill Smisek

Director of Parks and Recreation

Recreation Facilities Manager

Recreation Supervisor

Athletic Supervisor

Recreation Facilities Supervisor

Recreation Facilities Supervisor

Arena Maintenance Operator

Parks Maintenance Supervisor

Administrative Specialist

Office Specialist

Youth/Teen



Playground Pals

Playground Pals is open to youth ages 3-12 and will be split into two different age groups: Ages 3-6 (must be potty-trained and must be 3 by Jan.



1, 2021) and ages 7-12. The activities, led by fun, outgoing staff, will center around a different theme each week and include arts and crafts, games, sports, storytime, singing and playing with other playground pals. Themes may include: *Holiday Hoopla, It's a Jungle Out There, Silly Sports Challenge, Spot Light on You, Under the Sea, Up Up and Away*, and possibly others. **Note:** Inclement weather days will be canceled. *Registration deadline is one week prior to the session.*

9:30-11:30 a.m.

Mondays and Wednesdays, June 21-July 7

113901-C1 Ages 3-6 Holiday Park
113901-C2 Ages 7-12 Holiday Park
113901-C3 Ages 3-6 Liberty Park
113901-C4 Ages 7-12 Liberty Park

Tuesdays and Thursdays, June 22-July 8

113901-C5 Ages 3-6 Hidden Valley Park
113901-C6 Ages 7-12 Hidden Valley Park
113901-C7 Ages 3-6 Northwood Park
113901-C8 Ages 7-12 Northwood Park

Mondays and Wednesdays, July 12-28

113901-D1 Ages 3-6 Holiday Park
113901-D2 Ages 7-12 Holiday Park
113901-D3 Ages 3-6 Liberty Park
113901-D4 Ages 7-12 Liberty Park

Tuesdays and Thursdays, July 13-29

113901-D5 Ages 3-6 Hidden Valley Park
113901-D6 Ages 7-12 Hidden Valley Park
113901-D7 Ages 3-6 Northwood Park
113901-D8 Ages 7-12 Northwood Park

\$35 New Hope residents

\$42 Nonresidents

Mondays and Wednesdays, Aug. 2-11

113901-E1 Ages 3-6 Holiday Park
113901-E2 Ages 7-12 Holiday Park
113901-E3 Ages 3-6 Liberty Park
113901-E4 Ages 7-12 Liberty Park

Tuesdays and Thursdays, Aug. 3-12

113901-E5 Ages 3-6 Hidden Valley Park
113901-E6 Ages 7-12 Hidden Valley Park
113901-E7 Ages 3-6 Northwood Park
113901-E8 Ages 7-12 Northwood Park

\$24 New Hope residents

\$31 Nonresidents

Super Summer

Super Summer is for youth ages 7-12 who are interested in being active this summer! The activities will be led by fun, outgoing staff. Each week will center around a theme and will include sports and games, arts and crafts, nature activities and much more. Themes may include: *Games Galore, Hollywood, Just for Fun, Sockin Good Time, Survivor*, and *Water Blaster*. *Register by June 14.*

1-3:30 p.m.

June 21-July 29

113902-A Mondays and Wednesdays
Holiday Park

113902-D Tuesdays and Thursdays
Northwood Park

\$43 New Hope residents

\$50 Nonresidents

Playground Pals/Super Summer Park Locations:

- Hidden Valley Park, 8800 32nd Ave N
- Holiday Park, 9024 47th Ave N
- Liberty Park, 9015 60th Ave N
- Northwood Park, 3815 Boone Ave N

Park Passport

Youth ages 7-14, check these parks off your park passport as you explore these hidden gems in



New Hope, Crystal and Robbinsdale. Activities will be specific to that park so that each week will be an adventure. *Registration deadline is one week prior to the class date.* *New Hope, Crystal and Robbinsdale receive resident rate. Save \$10 by registering for all six at the same time!

9:30-11:30 a.m.

\$10 Residents*/\$17 Nonresidents

\$50 Residents* /\$92 Nonresidents (all six sessions)

113904-A Friday, June 18

Sochacki Park, 3500 June Ave N, Robbinsdale

113904-B Friday, June 25

MAC Wildlife Area, 6001 Regent Ave N, Crystal

113904-C Friday, July 9

Little Acre Park, 4948 Zealand Ave N, New Hope

113904-D Friday, July 16

Sanborn Park, 4236 Drew Ave N, Robbinsdale

113904-E Friday, July 23

North Lions Park, 6103 Louisiana Ave N, Crystal

113904-F Friday, July 30

Dorothy Mary Park, 8030 60 1/2 Ave N, New Hope



Beginning Sports-of-Sorts

A fun program where the young athlete can learn some basic sports skills. Boys and girls, ages 4-6, will be involved in various activities, including t-ball, soccer, basketball and football. Fee includes a t-shirt. *Registration deadline is one week prior to the session.*

111401-A Mondays, June 7-28

111401-B Mondays, July 5-26
5:30-6:15 p.m.

Holiday Park, 9024 47th Ave N

\$39 New Hope residents

\$46 Nonresidents

T-Ball One

Learn the rules of baseball in this fun league for ages 4-5. Hit off of a tee and develop skills such as throwing, catching, base running and fielding. Practice your skills, then try them out during games. Rain make-up date is Aug. 9.

110302-A Mondays and Wednesdays
June 21-Aug. 4
5:45-6:30 p.m.

Meadow Lake Elementary,
8525 62nd Ave N

\$54 If registered by May 28;

\$64 after May 28

(Nonresidents of New Hope
add \$7 to the fee)

T-Ball Two

Learn the rules of baseball in this fun league for ages 5-6. Hit off of a tee and develop skills such as throwing, catching, base running and fielding. Practice your skills, then try them out during games. Rain make-up date is Aug. 10.

110303-A Tuesdays and Thursdays
June 22-Aug. 5
6-7 p.m.

Meadow Lake Elementary, 8525 62nd Ave N

\$54 If registered by May 28; \$64 after May 28

(Nonresidents of New Hope add \$7 to the fee)



Baseball Programs

New Hope Parks and Recreation baseball programs are a positive introduction to baseball for your child. Programs will focus on fun, fitness, and fundamentals, which are vital to growing a child's love for the game.

Each team needs two coaches. A coaches orientation will be scheduled for early June and will include program information and helpful coaching tips provided by the Minnesota Twins. Coaches' children receive a free registration (One child per team coached. No friend requests will be taken after the coaches' meeting. Payment is due at the time of registration and will be refunded after the season is complete). If interested, contact Aaron Thelen at 763-531-5153 or athelen@newhopemn.gov.

The leagues consist of practices and games. Participants will receive their team information at the coaches' meeting in June. Based on the number of teams, some practices may be held at Liberty or Little Acre parks. The program fee includes a hat and t-shirt. Players should bring a glove and water bottle to each game and practice.

Save the date! Picture night is Monday, June 28 at the New Hope Performance Center, 4401 Xylon Ave N. Register by Friday, May 28 and save \$10!



Pitch by Coach

Let's play ball! Youth ages 6-8, have fun and learn more about baseball as coaches pitch in this league. Whether you've played before or it's your first time, you will learn ball skills including batting, fielding, and positioning. Aluminum bats and soft-tee balls are used. Rain make-up date is Aug. 9.

110304-A Mondays and Wednesdays
June 21-Aug. 4
6:45-7:45 p.m.

Meadow Lake Elementary, 8525 62nd Ave N

\$54 If registered by May 28; \$64 after May 28

(Nonresidents of New Hope add \$7 to the fee)



Revolutionary Sports T-ball

This fundamental skills program includes throwing, catching, hitting, base running and fielding. Each day will end with a scrimmage. This program is led by Revolutionary Sports staff.

Tuesdays, May 4-June 1

130305-A Ages 2-3 with parent
5-5:25 p.m.

130305-B Ages 3-5 with parent
5:30-6:10 p.m.

Welcome Park, 4630 Welcome Ave N, Crystal
\$59 Residents of New Hope and Crystal
\$66 Nonresidents

Revolutionary Sports Coach Pitch Baseball/Softball

This fundamental skills program includes throwing, catching, hitting, base running and fielding. Each session consists of a warm-up, skills and ends with a scrimmage. This program is led by Revolutionary Sports staff.

Tuesdays, May 4-June 1

110306-A Ages 4-6
6:15-6:55 p.m.

110306-B Ages 5-8
7-7:45 p.m.

Welcome Park, 4630 Welcome Ave N, Crystal
\$59 Residents of New Hope and Crystal
\$66 Nonresidents

Golf League

Grab some friends and enjoy your summer playing golf in our junior league! Boys and girls of all skill levels between the ages of 8 and 17 can participate in this 10-week league. This league focuses on recreation, learning and fun! The league features weekly instruction with events and prizes. There will be a pizza party on the last league day. Instruction will be held at 11 a.m. each week, followed by golf. And, we offer the best deal around—unlimited golf all season for \$175!

Tuesdays, June 15-Aug. 17

11 a.m.-1:30 p.m.

New Hope Golf Course, 8130 Bass Lake Road

111800-A \$110 for entry fee and 10 league days

111800-B \$175 for entry fee and unlimited golf



Golf Lessons

These programs emphasize the “fundamentals and fun” in the game of golf. Participants ages 5-15 will learn rules, etiquette and scoring, and will gain a better understanding of the golf swing and how the game is played. These lessons will provide a solid foundation for the future, both on and off the course. Clubs available, or you may bring your own.

Saturdays, May 22, June 5, 12

111801-A Ages 5-8, 10-11 a.m.

111801-B Ages 9-12, 11:15 a.m.-12:15 p.m.

111801-C Ages 9-12, 12:30-1:30 p.m.

111801-D Ages 12-15, 1:30-2:30 p.m.

New Hope Golf Course, 8130 Bass Lake Road
\$50 for three, one-hour lessons

Golf Sampler

Did you know there are many different types of golf out there? Try this Golf Sampler class to see what it's like to play Disc Golf, Foot Golf and real Golf. If you've played before, or it's your first time, drop in and give this sampler class a try! This is for youth ages 5-14 with an adult. All equipment will be provided and disinfected between users. Keep your eye out as there may be an end of the summer tournament as well. *The registration deadline is five days prior to the class.*

1-3 p.m.

Northwood Park (east side), 3815 Boone Ave N

\$5 per child New Hope residents

\$12 per child Nonresidents

131801-A Wednesday, June 16

131801-B Wednesday, July 21

131801-C Wednesday, Aug. 18



Golf Clinic

These special youth clinics will introduce kids ages 5-12 to the rules and etiquette of golf or allow them to work on specific skills. Clubs available, or you may bring your own.

Saturday, May 15

111802-A 10-10:45 a.m.

111802-B 10:45-11:30 a.m.

111802-C 11:30 a.m.-12:15 p.m.

New Hope Golf Course, 8130 Bass Lake Road
\$5 per clinic

New Hope Skating School

New Hope Skating School classes are based on the Ice Sports Industry's (ISI) Recreational Ice Skating Program for ice skaters 3 years of age and older. Pre-Alpha, Alpha, Beta, Gamma and Delta are all skill levels of the testing program. Private Lessons are also available. Please see the class descriptions for further details. Classes are taught by Dawn Landon and her fine staff. Participants will need skates with guards. Rental skates are available. Tots are encouraged to wear helmets. Classes are held on the south rink (meet at the bottom of stairs). For additional information, call the New Hope Parks and Recreation Department at 763-531-5151 or the ice arena at 763-531-5181.

New Hope Ice Arena, 4949 Louisiana Ave N



Mondays, June 7-Aug. 16 (no class July 5)

161201-A Tot 1 (ages 3-5), 6:30-7 p.m.
 161201-A1 Tot 2 (ages 3-5), 6:30-7 p.m.
 161201-A2 Tot 3 (ages 3-5), 6:30-7 p.m.
 161203-A Alpha 6:30-7 p.m.
 161202-A Pre-Alpha (ages 6-12), 7-7:30 p.m.
 161204-A Beta 7-7:30 p.m.
 161205-A Gamma 7-7:30 p.m.
 161206-A Delta 7-7:30 p.m.
 161207-A Adults 7:30-8 p.m.
 \$100 New Hope residents
 \$107 Nonresidents

161209-A Skate Rental (10 classes)
 \$15 per participant

Private Lessons

ISI Membership is required for levels Free Style 1 and up.

161208-A Mondays, June 7-Aug. 16 (no class July 5)
 7:30-9 p.m.

\$234 New Hope residents
 \$241 Nonresidents



Skating Level Definitions:

Tot 1: For participants who have never skated.

Tot 2: For participants who can get up and march.

Tot 3: For participants who can get up, march and glide. Students learn the two-foot glide, forward and backward swizzles, one-foot glide, backward wiggle.

Pre-Alpha (Beginner): Students learn the two-foot glide, forward and backward swizzles, one-foot glide, backward wiggle.

Alpha: Passed Tot 3, Pre-Alpha or equivalent. Students learn forward stroking, forward cross-overs on right and left, and one-foot snowplow stop.

Beta: Passed Alpha or equivalent. Students learn backward stroking, backward crossovers and t-stops on right and left.

Gamma: Passed Beta or equivalent. Students learn forward outside 3-turn on right and left, Mohawk combination on right and left, and hockey stop.

Delta: Passed Gamma or equivalent. Students learn forward inside 3-turn on right and left, forward edges inside and outside, bunny hop, and a choice of Shoot the Duck or Lunge to a one-foot glide.

Adults: All ability levels.

Fencing

Youth in grades 2-8, get pumped and primed for the spring fencing championship! Each fencing class follows four basic components: Teach It!...Hall of Fame Olympic Fencing Coach Ro Sobalvarro crafts our lessons and curriculum. Practice It!...Students pair up and practice the fencing move or concept, rotate partners and repeat. Move It!... Students then participate in fencing matches using only the moves taught so far. Play It!...Students will spend 10-15 minutes of each class fencing with multiple fencers at their skill level. Session includes an in-class tournament at the end of the session. All equipment and instructors provided by Youth Enrichment League (YEL). Suitable for new and returning students. *Register by April 1.*

110601-A Thursdays, April 8-May 13
 7:40-8:40 p.m.

Crystal Community Center, 4800 Douglas Drive
 \$79 Residents of New Hope, Crystal and Robbinsdale
 \$86 Nonresidents



Lightsaber Star Wars Sword Play

Youth ages 5-14, learn martial arts Lightsaber skills influenced by the epic movie series, *Star Wars*. Understand strikes, blocks and stances using swords. Master Tom Malone will help you develop your own moves, all while exercising and having fun! Padded swords are provided, or students may bring their own Lightsaber to class. *Register by July 7.*

111003-A Wednesdays, July 14-28
6:30-7:15 p.m.

New Hope Ice Arena Community Room
4949 Louisiana Ave N
\$64 Residents of New Hope, Crystal and Robbinsdale
\$71 Nonresidents

Little Tigers Martial Arts

Calling Little Tigers ages 3-5! Learn basic martial arts skills including kicks, punches and strikes. Develop coordination and flexibility through a variety of exercises. This program, taught by Master Tom Malone, promotes focus, discipline and respect, which are great personal tools to carry into the future. *Deadline to register is one week prior to the class.*

311001-A2 Tuesdays, April 6-May 11
10-10:30 a.m.
111001-A Tuesdays, June 22-July 27
10-10:30 a.m.

New Hope Ice Arena, 4949 Louisiana Ave N
\$54 Residents of New Hope, Crystal and Robbinsdale
\$61 Nonresidents

Tae Kwon Do

Youth ages 5 and over, this program will teach discipline, focus, endurance and flexibility. Master Tom Malone will help you achieve awesome kicks, punches and strikes while getting in shape. Students will be separated by skill level. *Register by June 15.*

111002-A Tuesdays, June 22-July 27
10:40-11:25 a.m.

New Hope Ice Arena, 4949 Louisiana Ave N
\$69 Residents of New Hope, Crystal and Robbinsdale
\$76 Nonresidents

Kid Smart Self Defense

A fun and exciting way to learn how to defend yourself. Youth ages 6-12 will learn how to react to a stranger and defend against an attacker. Learn escapes, kicks and basic strikes while playing fun games, taught by Master Tom Malone. *Register by June 18.*

111004-A Friday, June 25
9-11 a.m.

Northwood Park Picnic Pavilion (east side)
3815 Boone Ave N
\$34 Residents of New Hope, Crystal and Robbinsdale
\$41 Nonresidents

Revolutionary Sports Soccer

For youth ages 5-9, these programs will help players develop their individual skills, including dribbling, passing, shooting, and defending. Participants will have the opportunity to play in games and learn the values of sportsmanship and teamwork while having fun in a semi-competitive environment. These classes are suitable for new and existing players. These programs are coordinated by John Richardson and run by Revolutionary Sports staff.

Tuesdays, April 13-May 11

311205-D MiniStars, ages 5-7
6-6:45 p.m.
311206-D MightyStars, ages 6-9
6:45-7:30 p.m.

Tuesdays, May 18-June 15

111205-A MiniStars, ages 5-7
6-6:45 p.m.
111206-A MightyStars, ages 6-9
6:45-7:30 p.m.

Tuesdays, Aug. 3-31

111205-B MiniStars, ages 5-7
6-6:45 p.m.
111206-B MightyStars, ages 6-9
6:45-7:30 p.m.

Hidden Valley Park, 8800 32nd Ave N
\$59 New Hope Residents
\$66 Nonresidents

Tennis Lessons

CHEM Athletics will help participants ages 6-12 develop their hand-eye coordination as they learn the basic skills of tennis. Movement and tracking skills will give the kids the ability to properly handle a racquet and ball. Equipment provided or you may bring your own racquet.

Thursdays, April 15-May 20

311505-A Beginner/Intermediate, Ages 6-9
6-7 p.m.
311506-A Intermediate, Ages 6-12
7-8 p.m.

Tuesdays and Thursdays, July 13-Aug. 10

111505-A Beginner/Intermediate, Ages 6-9
6-7 p.m.
111506-A Intermediate, Ages 6-12
7-8 p.m.
Hidden Valley Park, 8800 32nd Ave N
\$65 Residents of New Hope, Crystal and Robbinsdale
\$72 Nonresident



Pee Wee Soccer

An introduction to soccer for active youth ages 5 and 6. Boys and girls will learn basic skills, rules, and sportsmanship while having fun with other youth their age. Fee includes a t-shirt. *Register by June 30.*

111202-A Tuesdays, July 6-27
6:40-7:25 p.m.

Liberty Park, 9015 60th Ave N

\$38 New Hope residents

\$45 Nonresidents

All Stars Soccer

Here is a class designed to perfect some basic skills such as dribbling, passing and shooting. Participants ages 7-8 will have the opportunity to play mini-games while having fun in a semi-competitive environment. Emphasis will be placed on fun and sportsmanship. Fee includes a t-shirt. *Register by June 30.*

111203-A Tuesdays, July 6-27
7:30-8:15 p.m.

Liberty Park, 9015 60th Ave N

\$38 New Hope residents

\$45 Nonresidents

Revolutionary Sports Flag Football

This program will focus on individual player development as participants learn the skills and rules of the game. They will also play casual games. Each day will focus on a topic that builds on the previous topic. No special equipment is needed. This program is coordinated by John Richardson and run by Revolutionary Sports staff.



Sundays, Aug. 1-29

110701-A1 KinderStars, Ages 4-6 with parent
2:45-3:30 p.m.

110701-B1 MiniStars, Ages 5-7
3:30-4:15 p.m.

110701-C1 MightyStars, Ages 6-9
4:15-5 p.m.

Sundays, Sept. 12-Oct. 10

110701-A2 KinderStars, Ages 4-6 with parent
2:45-3:30 p.m.

110701-B2 MiniStars, Ages 5-7
3:30-4:15 p.m.

110701-C2 MightyStars, Ages 6-9
4:15-5 p.m.

Robbinsdale Middle School turf, 3730 Toledo Ave N

\$59 Residents of New Hope, Crystal, Golden Valley,
Robbinsdale and St. Louis Park

\$66 Nonresidents

Northwest Suburban Flag Football League

Flag football provides youth with physically active, non-contact continuous action, along with learning teamwork, sportsmanship and the fundamentals of football. This league is a cooperative program between the cities of New Hope, Crystal, Plymouth and Robbinsdale. Thursday practices will take place at Robbinsdale Middle School or Welcome Park, and Sunday games will be played on Plymouth fields. Other weeknight games may be added. *Register by Aug. 20.*

110702-A Ages 5-6

110702-B Ages 7-8

110702-C Ages 9-10

110702-D Ages 11-12

Practices: Thursdays, Aug. 26-Oct. 7
6-7 p.m.

Games: Sundays, starting Sept. 12
times vary, 4-8 p.m.

\$72 Residents of New Hope, Crystal, Plymouth
and Robbinsdale

\$79 Nonresidents

Volunteer Coaches Needed

Parent volunteer coaches are needed. Coaches will receive a refund of their child's program fee at the end of the program. Training available. For more information, please call 763-531-5155.

Amazing Athletes

This is the perfect class for children ages 3-5 to get moving and learn new sports and skills. Amazing Athletes gives every child the chance to learn the fundamentals of many different sports along with hand-eye coordination, gross motor skills and cognitive development. Registration deadline is one week prior to the class.

Thursdays, April 8-29

110101-A1 5:30-6:15 p.m.

110101-A2 6:30-7:15 p.m.

Thursdays, Aug. 5-26

110101-B1 5:30-6:15 p.m.

110101-B2 6:30-7:15 p.m.

Crystal Community Center, 4800 Douglas Drive

\$40 Residents of New Hope, Crystal and Robbinsdale

\$47 Nonresidents





Athletic Associations

Plymouth/New Hope Little League

House league baseball for kids ages 6-12.
pnhll.org

Armstrong Cooper Youth Baseball

House and Traveling baseball for kids ages 13-18.
acybaseball.com

Cooper Armstrong Fastpitch Association

Traveling softball for girls ages 8-18.
caheatfastpitch.org

Armstrong Cooper Youth Football Association

Touch football for grades 1-2. Tackle football for grades 3-8.
acyfa.com

Armstrong Cooper Youth Lacrosse Association

For boys 8-14 or girls 8-18.
acyla.com

New Hope/Crystal/Plymouth Swim Club

teamunify.com/mnnhcp



Red Cross Babysitting Training

This course provides youth ages 11-15 who are planning to babysit with the knowledge and skills necessary to safely and responsibly care for children and infants. Training helps participants develop leadership skills, learn how to develop a babysitting business, keep themselves and others safe, help children behave, and learn about basic child care. Participants will receive Babysitting, Pediatric CPR and First Aid certifications upon completion of the class. Participants will also receive a small personal first aid kit and flashlight, student handbook, drawstring backpack, and personal CPR face shield and glove set. Participants should bring a peanut-free lunch and snacks. *Deadline to register is one week prior to the class.*

113501-A Saturday, April 10

113501-B Saturday, June 19
8 a.m.-6 p.m.

New Hope City Hall, 4401 Xylon Ave N

\$140 Residents of New Hope, Crystal and Robbinsdale

\$147 Nonresidents

Safe at Home V

This virtual class is taught by an American Red Cross Licensed Training Provider and offered for boys and girls ages 8 and older, who are ever home alone. It will cover safety concerns parents have when their children are by themselves such as arriving home, responsibilities, phone and Internet safety, fire and gun safety and many others. Parents are welcome and encouraged to attend the last 15 minutes of class! A link to the Zoom Virtual Classroom will be emailed to participants. *Deadline to register is one week prior to the class.*

113504-A Monday, April 12

113504-B Monday, June 21
5:30-8:30 p.m.

\$55 Residents of New Hope, Crystal and Robbinsdale

\$62 Nonresidents

Heroes, Villains and Funny

Sidekicks Musical Theater Camp

Youth ages 6-10, who is your favorite character? Whether you like to save the day, cause trouble or make people laugh, this musical theater camp is for you! Let's learn songs and dances from our favorite artists and create our own story! We will talk about what makes a character great and how to bring them to life! We will also play fun, creative theater games! Learn how to properly speak your lines, block a scene, develop your character and much more! No experience necessary. All that is needed are comfortable clothing and lightweight tennis shoes or dance shoes. Friends and family are invited to a special performance beginning the final 30 minutes of the final class. *Register by March 22.*

313201-A Monday-Thursday, March 29-April 1
1-4 p.m.

Crystal Community Center, 4800 Douglas Drive

\$95 Residents of New Hope, Crystal and Robbinsdale

\$102 Nonresidents

Wizard

Masters

Youth ages 6-11,
let the magic

begin as you enter the world of Harry Potter and explore potions, wizard sports, dark arts, wands and more. Use Lego® bricks and other materials to bring the fantasy and history to life. *Register by June 6.*

114102-I Monday-Thursday, June 14-17
10 a.m.-12 p.m.

Crystal Community Center, 4800 Douglas Drive

\$85 Residents of New Hope, Crystal and Robbinsdale

\$92 Nonresidents



Mega Machines

Youth ages 8-13 create some of your favorite motorized vehicles. Learn about gear ratio, sensors, pulleys, cranks, and programming to build trucks, space rovers, helicopters and much more. *Register by Aug. 10.*
113301-L Wednesday-Friday, Aug. 18-20
9 a.m.-12 p.m.

Crystal Community Center, 4800 Douglas Drive
\$95 Residents of New Hope, Crystal and Robbinsdale
\$102 Nonresidents

Amusement Park Engineering

Youth ages 8-13 will learn about the science that goes into building amusement park rides. You will become engineers of your own amusement park rides as you learn the core physics and engineering concepts used to make a ride thrilling! *Register by Aug. 10.*

113301-D Wednesday-Friday, Aug. 18-20
1-4 p.m.

Crystal Community Center, 4800 Douglas Drive
\$95 Residents of New Hope, Crystal and Robbinsdale
\$102 Nonresidents



Planes, Trains and Automobiles

Youth ages 5-9, explore the world of transportation. You will build models of your favorite forms of transportation as you learn about energy, wheels and axles, air resistance, and more. Then we'll pull it all together to create a huge city built from LEGOs® and mini-figures. *Register by April 5.*

113301-I Monday, April 12
10 a.m.-12 p.m.

Crystal Community Center, 4800 Douglas Drive
\$25 Residents of New Hope, Crystal and Robbinsdale
\$32 Nonresidents

Epic Minecraft

Youth ages 7-14, travel to the Nether with Snapology, but watch out for those creepers! Bring Minecraft to life using LEGO® bricks and technology and create your own world and characters, and discover different aspects of Minecraft, solving common game problems and exploration in the Minecraft world. *Register by June 6.*

113701-B Monday-Thursday, June 14-17
1-3 p.m.

Crystal Community Center, 4800 Douglas Drive
\$85 Residents of New Hope, Crystal and Robbinsdale
\$92 Nonresidents

Acting Camps

Kids, take the stage during acting camp! You'll develop as actors by learning a script, doing exercises and preparing for a performance. On Friday evening at 7 p.m. at the Becker Park stage, you'll present the group performance complete with costumes, props, makeup and scenery for your family and friends! It is important for the camper to attend the performance. The instructor is Linda Bruning, who is assisted by Cyan Pampuch. *Register by July 26.*



Becker Park stage, 5530 Douglas Drive, Crystal

"In the Wings" (ages 5-7)

113200-A Monday-Friday, Aug. 2-6
9-10 a.m.

\$45 Residents of New Hope, Crystal and Robbinsdale
\$52 Nonresidents

"Enter Stage Left" (ages 8-12)

Participants should bring a peanut-free lunch and drink.

113201-A Monday-Friday, Aug. 2-6
10:15 a.m.-1 p.m.

\$73 Residents of New Hope, Crystal and Robbinsdale
\$80 Nonresidents

Three Rivers Outdoor Programs Geocaching

Youth ages 5 and older will learn the basics of Global Positioning System (GPS) technology. Master the buttons and functions of GPS units, then head outside to hunt for hidden treasures. *Register by April 17.*

111101-H Saturday, April 24
10 a.m.-12 p.m.

Northwood Park Pavilion (east side)
3815 Boone Ave N, New Hope
\$10 Residents of New Hope, Crystal and Robbinsdale
\$17 Nonresidents



Disc Golf

Youth ages 8 and older learn to play the game of disc golf, including rules, etiquette, equipment, and putting and distance throwing techniques. You don't need to be a Frisbee player to enjoy the satisfaction of rattling the chains when you hit the basket.

Register by April 30.

111101-J Saturday, May 8
11 a.m.-1 p.m.

Bassett Creek Park, 6001 32nd Ave N, Crystal
\$10 Residents of New Hope, Crystal and Robbinsdale
\$17 Nonresidents

Archery

Youth ages 8 and older, join us for Archery! Using NASP (National Archery in the Schools Program) instruction, we will guide you in learning to safely shoot a compound bow. Safety, history, and proper shooting techniques will be covered. *Register by June 4.*

111101-K Friday, June 11
10:30 a.m.-12:30 p.m.

French Regional Park Field Operations Office
12605 Rockford Rd, Plymouth
\$18 Residents of New Hope, Crystal and Robbinsdale
\$25 Nonresidents



Summer Explorer Camps

Enjoy these outdoor, nature focused experiences with Three Rivers Park District. Participants should bring a bag lunch, water bottle, and sunscreen each day. *Registration deadline is one week prior to the session.*

9 a.m.-4 p.m.
\$120 Residents of New Hope, Crystal and Robbinsdale
\$127 Nonresidents

Explore the Outdoors (Ages 7-10)

Activities will include birds, bugs, archery, games, trees, survival, animal signs and an off-site adventure.

111101-F1 Monday-Thursday, July 19-22

Sochacki Park, 3500 June Ave N, Robbinsdale

111101-F2 Monday-Thursday, Aug. 9-12

Bassett Creek Park, 3195 Welcome Ave N, Crystal

Extreme Fishing (Ages 10-15)

Participants will learn to fly fish, catch bait, tie knots and rig. Learn about the environment fish live in with a pond/lake/river/stream study.

111101-F3 Monday-Thursday, Aug. 23-26

Bassett Creek Park, 3195 Welcome Ave N, Crystal

Lil' Explorers Preschool Camps

Enjoy the outdoors with these unique nature experiences for children ages 4-6. These camps are hosted in partnership with Three Rivers Park District. *Registration deadline is one week prior to the class.*



10 a.m.-12 p.m.

Northwood Park Shelter (west side near playground)

3810 Boone Ave N, New Hope

\$10 Residents of New Hope, Crystal and Robbinsdale

\$17 Nonresidents

111100-A Birds Friday, June 18

111100-B Bugs Friday, July 16

111100-C Frogs Friday, July 30

111100-D Trees Friday, Aug. 20

Science Explorers

STEM Sampler

Youth entering grades 1-5, join Science Explorers for a fun, hands-on class of STEM



topics. First, we will explore chemistry as we learn the science of slime while making Glow Slime, Butter Slime and more. Next, we will explore physics as we learn how toys worked before batteries while building science contraptions that really work. Then, we will confirm or bust strange myths and wacky urban legends as we ask the crazy questions, develop hypotheses, then we may smash it, crash it, or launch it to determine if the myth is confirmed, plausible or busted. Note: M&Ms (non-peanut variety) and Pop Rocks may be consumed. *Register by Aug. 24.*

Tuesday-Thursday, Aug. 31-Sept. 2

114102-L 9:30 a.m.-12 p.m.

Valley Place Park, 6822 32nd Ave N, Crystal

\$67 Residents of New Hope, Crystal and Robbinsdale

\$74 Nonresidents



Take-Home Science Kits

Are you looking for some fun projects for your kids or maybe a project to do as a family? Check out these amazing Science Explorers take-home Science kits! These kits are recommended for ages 8 and older, but can be for younger children if a parent assists. *Resident rate applies to New Hope, Crystal, Golden Valley and Robbinsdale residents.

- 114104-A Art Bot
\$20 Residents*/\$27 Nonresidents
- 114104-B STEM Sampler: Aerospace & Chemistry
\$20 Residents*/\$27 Nonresidents
- 114104-C STEM Sampler: Chemistry & Electricity
\$20 Residents*/\$27 Nonresidents
- 114104-D STEM Sampler: Slime & Catapults
\$30 Residents*/\$37 Nonresidents
- 114104-E Preschool Chemistry (ages 3+ w/adult)
\$40 Residents*/\$47 Nonresidents
- 114104-F Young Inventors
\$50 Residents*/\$57 Nonresidents



Spectacular Splatter Painting

Youth ages 5-12 will learn about and be inspired by Jackson Pollock and his super-duper messy painting technique called splatter painting. Bring a nut-free snack and drink. *Register by April 30.*

113100-M Friday, May 7
9 a.m.-12 p.m.

Crystal Community Center, 4800 Douglas Drive
\$32 Residents of New Hope, Crystal and Robbinsdale
\$39 Nonresidents

KidCreate Studio

Peppa Pig

Your little one ages 3-6 will create an adorable mixed media Peppa Pig! We'll draw, paint, snip and glue to create Peppa Pig frolicking in one of the places she loves best--a mud puddle! *Register by June 17.*

113600-M Friday, June 25
10-11 a.m.

Crystal Community Center, 4800 Douglas Drive
\$17 Residents of New Hope, Crystal and Robbinsdale
\$24 Nonresidents



Mess Fest

Big mess means big fun! Youth ages 3-6 will make clay lions with magnificent manes, birds snuggled down in their nests, a silly green frog and more! Your little one will love exploring and creating with clay, paint, and more at our best mess fest ever! Bring a nut-free snack and drink for your child. *Register by Aug. 1.*

113600-N Monday-Wednesday, Aug. 9-11
9 a.m.-12 p.m.

Crystal Community Center, 4800 Douglas Drive
\$86 Residents of New Hope, Crystal and Robbinsdale
\$93 Nonresidents



Magical Mystical Unicorns

Unicorn fans ages 5-12, you're in luck, because we have the perfect camp for you! We'll make unicorns that dazzle, sparkle and shine as we explore a wide array of materials and techniques. We'll draw, sculpt and even learn the secret recipe for making fabulous, glittery Unicorn Slime! Bring a nut-free snack and drink. *Register by Aug. 1.*

113600-O Monday-Wednesday, Aug. 9-11
1-4 p.m.

Crystal Community Center, 4800 Douglas Drive
\$86 Residents of New Hope, Crystal and Robbinsdale
\$93 Nonresidents



Glitter and Glow Art Camp

Glitter and glow... here we go! Youth ages 5-12 will work with a variety of art supplies including clay, glow-in-the-dark paint and of course, lots and lots of glitter! Create snow globes that glow-in-the-dark, butterflies that shimmer and glimmer, an Eiffel Tower with stars that twinkle and so much more. Bring a nut-free snack and drink. *Register by Aug. 22.*

113600-P Monday and Tuesday, Aug. 30 and 31
1-4 p.m.

Crystal Community Center, 4800 Douglas Drive
\$68 Residents of New Hope, Crystal and Robbinsdale
\$75 Nonresidents



Safety Camp

Your child will learn an incredible amount of safety information in three days. Campers will attend various safety sessions throughout the camp, which may include water safety, personal safety, home safety, internet safety and much more. We will also spend time playing park games and various activities. Safety Camp is for those entering Grades 3-5 in Fall 2021. Camp concludes with a graduation ceremony at 5 p.m. on Aug. 12. Fee includes t-shirt, snacks, lunches and graduation event. Additional information will be emailed by Aug. 5. Spaces are limited so register early. *Register by July 15 and save \$5!*

113503-A Tuesday-Thursday, Aug. 10-12
7:30 a.m.-4:30 p.m.
(program begins at 8 a.m.)

Civic Center Park, 4401 Xylon Ave N
\$50 If registered by July 15; \$55 after July 15
(Nonresidents of New Hope and Crystal add \$7 to the fee)

Thank you to our Safety Camp Sponsors:

New Hope Parks and Recreation; New Hope Police Department; West Metro Fire-Rescue District in conjunction with Twin West Chamber of Commerce; New Hope Crime Prevention Fund Board; New Hope Women of Today; New Hope Lions Club; Stantec; Jensen Sondrall Persellin and Woods, P.A.; West Metro VFW #7051 and Broadway Awards



Dance Class

Here is your chance to try a dance class! These classes are designed for new students or beginners. Instructor Melissa Guse will teach basic tap and ballet skills. No shoes or leotard needed. If you do purchase shoes, black tap and pink ballet shoes are required for the fall through spring classes. *Registration deadline is one week prior to the class.*

Mondays, July 5-26

110501-A Ages 3-5*
5-5:45 p.m.
110502-A Grades K-2*
5:55-6:40 p.m.

Mondays, Aug. 2-23

110501-B Ages 3-5*
5-5:45 p.m.
110502-B Grades K-2*
5:55-6:40 p.m.

New Hope Ice Arena Community Room
4949 Louisiana Ave N
\$33 New Hope residents
\$40 Nonresidents
(*Must be 3 by June 1, 2021)
(*Must be entering grade in fall 2021)

Tumbling Tots

Youngsters ages 2 to 4, along with a parent, will learn the basics of gymnastics including tumbling skills and the equipment used in the sport. They will get the benefit of developing their gross motor skills while having a lot of fun. A parent must participate!

Thursdays, June 10-July 29 (no class July 1)

110806-D1 Ages 2-3
4:25-5:10 p.m.
110806-D2 Ages 3-4
5:15-6 p.m.

Location to be determined
\$56 Residents of New Hope and Golden Valley
\$63 Nonresidents



Gymnastics

You've watched the gymnasts competing at the Olympics--would you like to try it too? Then get ready for an exciting session of gymnastics! Our quality gymnastics staff will provide their expertise to help participants achieve better physical fitness, coordination, and gymnastics skills--all while having a great time! The program has an ability-level curriculum designed to help you determine which class is best for your child.

New Hope Learning Center, 8301 47th Ave N

Tuesdays: June 8-July 27 (no class June 29)

Wednesdays: June 9-July 28 (no class June 30)

Thursdays: June 10-July 29 (no class July 1)

Fridays: June 11-July 30 (no class July 2)

Beginner Ages 4-5:

110801-C Wednesdays, 5:45-6:30 p.m.

110801-E Fridays, 9:15-10 a.m.

\$59 Residents of New Hope and Golden Valley

\$66 Nonresidents

Beginner - Intermediate Ages 6+:

110802-C Beginner/Advanced Beginner 6-10
Wednesdays, 6:40-7:40 p.m.

110802-D Beginner/Advanced Beginner 6-10
Thursdays, 6:10-7:10 p.m.

110802-E Beginner/Advanced Beginner 6-10
Fridays, 10:15-11:15 a.m.

\$67 Residents of New Hope and Golden Valley

\$74 Nonresidents

110803-B Intermediate 6+
Tuesdays, 5:20-6:35 p.m.

110803-C Beginner/Adv Beg/Intermediate 10+
Wednesdays, 7:45-9 p.m.

110803-E Intermediate 6+
Fridays, 10:15-11:30 a.m.

\$77 Residents of New Hope and Golden Valley

\$84 Nonresidents

Advanced/Advanced 2:

110805-B Tuesdays, 6:45-8:45 p.m.

110805-E Fridays, 11:15 a.m.-1:15 p.m.

\$108 for one Advanced class

\$163 for two Advanced classes for the same student
(Nonresidents of New Hope and Golden Valley add \$7)

Gymnastics Level Definitions

Beginner: Little or no gymnastics experience.

Advanced Beginner: For those who have mastered squat-through and straddle-over at first height level (vault); Six swings with regrip to landing on feet, pullover and cast (bars); All walks and dismounts with no help (beam); Positions, jumps, rolls and cartwheels (floor).

Intermediate: With instructor approval, for those who have mastered squat-through and straddle-over at second height level (vault); Back hip circle and casting sole circle (bars); Scales, turns, basic jumps and higher level walks (beam); Higher level jumps, leaps, roundoff, handstand variations (floor).

Advanced: With instructor approval, for those who have mastered hands-on, feet-on, handstand off (vault); Long hang pullover (bars); All jumps, forward roll, front handspring dismount (beam); Back walkover, front handspring (floor).

Advanced 2: For those who have mastered front handspring (vault); Fly-away, kip on low bar (bars); Back walkover, hands-free dismount (beam); Roundoff to back handspring (floor).

Gymnastics Strength and Conditioning

This program is designed to help you build strength and endurance with fun and challenging workouts. We will

utilize a variety of exercises to work your core, back, legs and arms. Conditioning drills will be used to improve your cardio, muscle strength and balance to better prepare you for the next competitive season. Must be enrolled in Intermediate or Advanced Gymnastics class.

110810-B Tuesdays, June 8-July 27 (no class June 29)
8:45-9:15 p.m.

110810-E Fridays, June 11-July 30 (no class July 2)
1:15-1:45 p.m.

New Hope Learning Center, 8301 47th Ave N

\$50 Residents of New Hope and Golden Valley

\$57 Nonresidents



Sports Camps



These sports camps are a collaborative between the New Hope Parks and Recreation Department, Cooper High School and District 281 Summer Academy. For sports camps marked with the * symbol, residents are considered to be those who live in New Hope, Crystal, Golden Valley or Robbinsdale. Participants must be entering a specified grade in the fall of 2021 or meet the age requirement by Sept. 1, 2021.



Boys' Basketball Camp

This camp will help participants become more skilled and complete basketball players while having a blast. Players will work on drills to improve their skills in ball handling, shooting, rebounding, defense and strategies of the game. The camp will be led by Cooper Boys' head coach Bo Powell, his staff and players.

Monday-Friday, June 28-July 2

10:45 a.m.-12:15 p.m.

150201-A1 Grades 3-5

150201-A2 Grades 6-9

New Hope Community Gyms, 8230 47th Ave N
(north end of Cooper High)

\$64 Residents*

\$71 Nonresidents

Girls' Basketball Camp

Come learn the fundamentals of ball handling, shooting, rebounding, defense and strategies of the game of basketball. Participants will take home a variety of drills and basketball knowledge that will help make them better players. The camp will be led by Cooper High School head coach Raheem Simmons, his staff and players.



Monday-Friday, June 28-July 2

10:45 a.m.-12:15 p.m.

150201-B1 Grades 3-5

150201-B2 Grades 6-9

New Hope Community Gyms, 8230 47th Ave N
(north end of Cooper High)

\$64 Residents*

\$71 Nonresidents

Girls' Volleyball Camp

Improve your serving, passing, hitting, digging and blocking skills this summer. This camp will help participants improve their game and get ready for the upcoming season. This camp will be run by Cooper High School head coach Tia Russell, her staff and players.

Monday-Friday, June 21-25

10:45 a.m.-12:15 p.m.

151301-A1 Grades 3-5

151301-A2 Grades 6-9

New Hope Community Gyms, 8230 47th Ave N
(north end of Cooper High)

\$64 Residents*

\$71 Nonresidents

Soccer Camp

Don't miss your opportunity to participate in this fun and instruction-filled soccer camp for both boys and girls this summer. Players will focus on dribbling, passing, shooting and basic tactics. All learning will involve game-like activities to keep the players moving. The camp will be led by Cooper girls' head coach Nic Wetherall, his staff and players.

Monday-Friday, July 12-16

150900-A Grades K-3, 10:45 a.m.-12:15 p.m.

150900-B Grades 4-6, 9-10:30 a.m.

Plymouth Middle School

10011 36th Ave N, Plymouth

\$64 Residents*

\$71 Nonresidents



Track Camp

Work with Armstrong High School head girls' track coach Derek Fisher and varsity athletes as you develop speed, strength, flexibility and confidence. Specific skills will be taught for each event, and individualized attention will be given to develop each athlete.

Monday-Friday, Aug. 2-6

10:45 a.m.-12:15 p.m.

151200-A Grades 3-5

151200-B Grades 6-9

Cooper High School stadium
8230 47th Ave N, New Hope

\$64 Residents*

\$71 Nonresidents



Tennis Camp

Join us for these awesome camps! Youth in grades 6-9 will work on both singles and doubles skills. This camp is geared toward the more competitive tennis player. The beginner camp, for grades 3-5, will include games, activities and some match play as participants develop their skills. Both camps will be led by Cooper head tennis coach Kirk Lithun, his staff and players.

Monday-Friday, July 12-16

10:45 a.m.-12:15 p.m.

151100-A Grades 3-5

151100-B Grades 6-9

Cooper High School tennis courts

8230 47th Ave N, New Hope

\$64 Residents*

\$71 Nonresidents

Fencing Camp

Youth entering grades 2-8, learn the basics of fencing in this fun camp provided by Youth Enrichment League (YEL). Safety is our priority. We supply safety swords, protective masks, chest plates and jackets in a high-octane, inclusive environment. Sign up today to join this sport deemed the "sport of the intellectual athlete." *Registration deadline is one week prior to the session.*

Monday-Friday, July 19-23

150300-A 9-10:30 a.m.

150300-B 10:45 a.m.-12:15 p.m.

Monday-Friday, Aug. 2-6

150300-C 9-10:30 a.m.

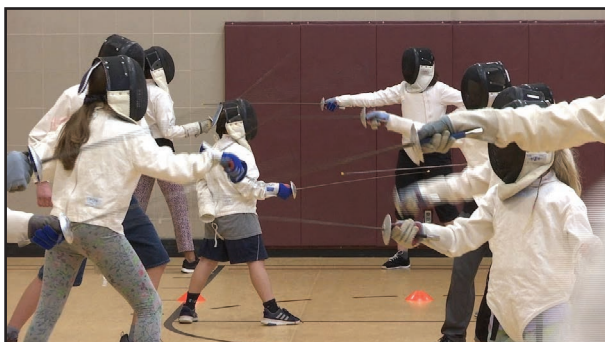
150300-D 10:45 a.m.-12:15 p.m.

Plymouth Middle School

10011 36th Ave N, Plymouth

\$75 Residents*

\$82 Nonresidents



Ultimate Frisbee Camp

This fast-paced game focuses on teamwork and good sportsmanship. We'll cover the rules of the game, as well as offensive and defensive strategies. Whether you come to learn the basics or improve your technique, you're sure to have a blast! This camp is coordinated by nationally licensed coach John Richardson and led by Revolutionary Sports staff.

Monday-Friday, July 19-23

150400-A Grades K-2, 9-10:30 a.m.

150400-B Grades 3-5, 10:45 a.m.-12:15 p.m.

Plymouth Middle School

10011 36th Ave N, Plymouth

\$79 Residents*

\$86 Nonresidents



Baseball Camp

This fundamental skills camp will include catching the ball in the air, grounders, throwing form, hitting, base running and fielding. Each day will include a warm-up, skills games and drills, and a scrimmage. The camp is coordinated by nationally licensed coach John Richardson and led by Revolutionary Sports coaches.

Monday-Friday, June 21-25

150601-A Grades K-2, 9-10:30 a.m.

150601-B Grades 3-5, 10:45 a.m.-12:15 p.m.

Plymouth Middle School

10011 36th Ave N, Plymouth

\$79 Residents*

\$86 Nonresidents

Flag Football Camp

This program includes passing, receiving, ball-carrying, defending hand-offs, running routes and more. The camp is coordinated by nationally licensed coach John Richardson and led by Revolutionary Sports coaches.

Monday-Friday, Aug. 9-13

151901-A Grades K-2, 9-10:30 a.m.

151901-B Grades 3-5, 10:45 a.m.-12:15 p.m.

Plymouth Middle School

10011 36th Ave N, Plymouth

\$79 Residents*

\$86 Nonresidents



Gymnastics Camp

Participants in the Beginner/Advanced Beginner camp will be introduced to all the equipment and receive one-on-one instruction. Intermediate and Advanced gymnasts will spend the week refining their skills in the vault, beam, bars, and floor routines. The week will be filled with contests, games, free time to practice new skills, and lots of fun! The camp will be led by gymnastics coordinator Rhonda Bitzer and her staff.

New Hope Learning Center, 8301 47th Ave N

Monday-Friday, Aug. 2-6

150500-A1 Beginner, Grades 1-6
9-10:30 a.m.

150500-A2 Beginner/Adv. Beginner, Grades 1-6
10:45 a.m.-12:15 p.m.

\$64 Residents*

\$71 Nonresidents

150500-A3 Intermediate/Advanced, ages 6 and up
6-8 p.m.

\$103 Residents*

\$110 Nonresidents

Monday-Thursday, Aug. 9-12

150500-B1 Beginner/Adv. Beginner, Grades 1-6
5:30-7 p.m.

\$53 Residents*

\$60 Nonresidents



Skateboard Camp

Skateboarding is one of the world's fastest growing sports. Whether you are just learning or are ready to learn more advanced tricks, kids in grades 1-6 will advance their skills and most importantly, have fun! Individual skills/tricks taught will include balance, stopping, turning, Ollie, nollie, heelflips and kickflips. Skateboard and helmet are required. We also recommend knee pads, elbow pads, and wrist guards. Please bring a water bottle and wear sunscreen. This camp is coordinated by nationally licensed coach John Richardson and led by Revolutionary Sports coaches.

Monday-Friday, Aug. 2-6

150800-B Grades 1-6, 10:45 a.m.-12:15 p.m.

New Hope Skate Park, 4401 Xylon Ave N

\$89 Residents*

\$96 Nonresidents



Ninja Warriors Camp

Individuals will be challenged through movement, strength, speed, coordination and agility. Our obstacle concepts will be modified to a gym setting with an eight-foot training structure similar to the show. This camp is coordinated by nationally licensed coach John Richardson and led by Revolutionary Sports coaches.

Monday-Friday, June 28-July 2

151500-A Grades K-2, 9-10:30 a.m.

151500-B Grades 3-5, 10:45 a.m.-12:15 p.m.

Plymouth Middle School

10011 36th Ave N, Plymouth

\$119 Residents*

\$126 Nonresidents

Major League Sports Camp



Play America's favorite sports. Coaches will teach fundamental skills and age-appropriate rules to play five of America's most popular professional sports--soccer, lacrosse, basketball, football and baseball. This camp is coordinated by nationally licensed coach John

Richardson and led by Revolutionary Sports coaches.

Monday-Friday, Aug. 2-6

151600-C Grades 3-5, 9-10:30 a.m.

151600-D Grades K-2, 10:45 a.m.-12:15 p.m.

Plymouth Middle School

10011 36th Ave N, Plymouth

\$79 Residents*

\$86 Nonresidents

Quidditch Camp

Come learn and play this fast-growing sport made popular by Harry Potter. The program starts with an active, skill-based warm-up and transitions into a fun and challenging game. We will end each day with a small-sided scrimmage. This program is coordinated by nationally licensed coach John Richardson and led by Revolutionary Sports staff.

Monday-Friday, July 12-16

151700-A Grades 3-5, 9-10:30 a.m.

151700-B Grades K-2, 10:45 a.m.-12:15 p.m.

Plymouth Middle School

10011 36th Ave N, Plymouth

\$79 Residents*

\$86 Nonresidents



Golf Camp

This camp will practice the basics of golf including proper stance, grip, striking and swinging. Clubs are provided, or players may bring their own. Each day is filled with instruction, fun activities and an opportunity to play some age-appropriate holes. Camp will be held at Plymouth Middle School on Monday-Thursday. Friday, the kids will be bused to the New Hope Village Golf Course to play some holes. This camp is coordinated by nationally licensed coach John Richardson and led by Revolutionary Sports coaches.



Monday-Friday, June 28-July 2

151800-A Grades 3-5, 9-10:30 a.m.

151800-B Grades K-2, 10:45 a.m.-12:15 p.m.

Plymouth Middle School

10011 36th Ave N, Plymouth

\$79 Residents*

\$86 Nonresidents



Archery Camp

Learn archery skills as you work on hand-eye coordination, focus and balance. There will also be friendly games and contests. All equipment is provided. This program is coordinated by nationally licensed coach John Richardson and led by Revolutionary Sports staff.

Monday-Friday, July 12-16

151604-A Grades K-2, 9-10:30 a.m.

151604-B Grades 3-5, 10:45 a.m.-12:15 p.m.

Plymouth Middle School

10011 36th Ave N, Plymouth

\$79 Residents*

\$86 Nonresidents



Lacrosse Camp

This camp is a non-competitive fundamental skills program for players who want to advance their skills. The camp maximizes the time a player spends with their own stick and focuses on stick handling, passing, catching and shooting. Focus will be on skill development while playing many activities and ending each day with a game. This camp is coordinated by nationally licensed coach John Richardson and led by Revolutionary Sports coaches.

Monday-Friday, June 21-25

150700-A Grades 3-5, 9-10:30 a.m.

150700-B Grades K-2, 10:45 a.m.-12:15 p.m.

Plymouth Middle School

10011 36th Ave N, Plymouth

\$79 Residents*

\$86 Nonresidents





Disc Golf Camp

Disc golf, also known as Frisbee golf, is a flying disc game in which individual players throw a disc at a target. Learn the basics of disc golf, including scoring, throwing, gripping and rules of the game. There are challenging objects for the disc golfer--trees, shrubs and terrain, but it's a game designed to be enjoyed by all ages.

Monday-Friday, July 19-23

151400-A Grades K-2, 9-10:30 a.m.
151400-B Grades 3-5, 10:45 a.m.-12:15 p.m.
Plymouth Middle School
10011 36th Ave N, Plymouth
\$79 Residents*
\$86 Nonresidents

Speed and Agility Camp

Speed, strength and quickness make for a great athlete. Learn to move faster, react quicker, and kick and throw farther. This course involves obstacle training, active games and individual challenges, so improve your skills, boost your confidence, and build your sports foundation. This program is coordinated by nationally licensed coach John Richardson and led by Revolutionary Sports staff.



Monday-Friday, Aug. 9-13

151001-B Grades 3-5, 9-10:30 a.m.
151001-C Grades K-2, 10:45 a.m.-12:15 p.m.
Plymouth Middle School
10011 36th Ave N, Plymouth
\$79 Residents*
\$86 Nonresidents

Team Handball Camp

As seen in the Olympics, team handball is a fast-moving team game that combines soccer and basketball. Participants will learn the fundamental rules and skills, play interactive games and end each day with a match. This camp is coordinated by nationally licensed coach John Richardson and led by Revolutionary Sports coaches.

Monday-Friday, July 19-23

151605-A Grades 3-5, 9-10:30 a.m.
151605-B Grades K-2, 10:45 a.m.-12:15 p.m.
Plymouth Middle School
10011 36th Ave N, Plymouth
\$79 Residents*
\$86 Nonresidents



Sports Extravaganza

Kids in grades 1-6 will have a great time playing over 25 different sports and games, including baseball, basketball, flag football, floor hockey, lacrosse, ninja warriors, soccer, softball, volleyball, and more! Kids will be divided based on age and ability. Half-day and full-day options are available. All participants will be transported on a full-day field trip to a local professional sports stadium on Thursday! Participants who register for a half-day session should bring a water bottle and snacks. Participants in the full-day session should bring a water bottle, lunch and snacks. This camp is coordinated by nationally licensed coach John Richardson and led by Revolutionary Sports coaches.

Monday-Friday, Aug. 30-Sept. 3

151602-A Half-day session, 8 a.m.-12 p.m.
151602-B Half-day session, 1-5 p.m.
\$145 Residents*
\$152 Nonresidents
151602-C Full-day session, 8 a.m.-5 p.m.
\$245 Residents*
\$252 Nonresidents
Crystal Community Center, 4800 Douglas Drive

Parent + Child

PreStars Soccer

This instructional soccer program, for ages 3-5 and a parent, will help players develop their individual skills. The program will cover dribbling, passing, shooting and defending. Each class will begin with an active, skill-based warm-up and end with an age-appropriate, small-sided scrimmage. All ability levels welcome. This program is coordinated by John Richardson and run by Revolutionary Sports staff.

311204-C Tuesdays, April 13-May 11
5:15-5:55 p.m.

131204-A Tuesdays, May 18-June 15
5:15-5:55 p.m.

131204-B Tuesdays, August 3-31
5:15-5:55 p.m.

Hidden Valley Park, 8800 32nd Ave N

\$59 New Hope residents

\$66 Nonresidents



Lil' Kickers Soccer

Have a lil' one who loves to kick a ball around? This parent-child class for ages 3-5, will have parents working one-on-one with their child in a fun, supportive environment to learn basic soccer skills such as kicking, dribbling, trapping, and shooting. Fee includes a shirt. *Register by June 30.*

Tuesdays, July 6-27

131201-A1 5-5:45 p.m.

131201-A2 5:50-6:35 p.m.

Liberty Park, 9015 60th Ave N

\$28 New Hope residents

\$35 Nonresidents



Stormy Weather?

If you are concerned that a class might be canceled because of bad weather, call the Weather Line at 763-531-5158.



Lil' Sluggers

Parents, work one-on-one with your 3-5 year old. Teach them the basic skills such as throwing, catching and batting in this fun and supportive environment. This program is facilitated by Parks and Recreation staff. Participants should bring a glove and water bottle. Fee includes a shirt. *Register by June 16.*

131301-A1 Wednesdays, June 23-Aug. 4
6-6:45 p.m.

Holiday Park, 9024 47th Ave N

\$39 Residents of New Hope

\$46 Nonresidents

Adult/Junior Golf Lessons

Would you like to do something special with your child? Basic fundamentals of golf will be taught to adults and children ages 5-12. Learn the game of golf or just pick up some extra tips while having fun with your child. Clubs are provided.

Sundays, May 23-June 13 (no class May 30)

131800-A 12-1 p.m.

131800-B 1-2 p.m.

New Hope Golf Course, 8130 Bass Lake Road

\$85 for three, one-hour lessons

Three Rivers Programming Night Hike

Youth ages 9 and older, along with an adult, experience the solitude of being in the woods at dusk and after sunset. We will look and listen for nocturnal wildlife and learn about different adaptations that animals (including humans) use to cope with the dark. *Register by April 5.*

132100-A Wednesday, April 7
7-8:30 p.m.

Sochacki Park, 3500 June Ave N, Robbinsdale
\$5 per child Residents of New Hope, Crystal
and Robbinsdale
\$12 Nonresidents



Spring Birding

Youth ages 9 and older and an adult, take a walk through the park looking for birds that have stayed all winter and those that have started to return. Learn about some of the great apps that can help you identify the birds in the area or help you keep track of what you're seeing. Binoculars and field guides provided. *Register by April 15.*

132100-F Saturday, April 17
1-3 p.m.

Sohacki Park, 3500 June Ave N, Robbinsdale
\$5 per child Residents of New Hope, Crystal and Robbinsdale
\$12 Nonresidents

Spring Phenology Hike

Youth ages 4 and older and an adult can take a stroll through woodlands and wetlands. Discover the sounds and sights of new life as we search for spring ephemeral flowers, listen for frog calls, and observe what birds have returned from their winter homes. Field guides will be provided. *Register by April 29.*

132100-J Saturday, May 1
10-11:30 a.m.

Sohacki Park, 3500 June Ave N, Robbinsdale
\$5 per child Residents of New Hope, Crystal and Robbinsdale
\$12 Nonresidents

Pond Study

Ponds are homes to life of all shapes and sizes. Youth ages 4 and older and an adult will discover some of the little critters that spend all or some of their lives in the water. These small animals are vital members of the food web and can also tell us about the health of the water. Nets and field guides provided. *Register by May 16.*

132100-K Tuesday, May 18
6-7:30 p.m.

Sohacki Park, 3500 June Ave N, Robbinsdale
\$5 per child Residents of New Hope, Crystal and Robbinsdale
\$12 Nonresidents

Music Together Free Demo V

Try our free online demo class that is designed to be an active music-making experience for children ages 1-5 and their grownup. Experience music activities for the whole family to enjoy. One registration per household. A link to the virtual classroom will be emailed to participants. *Register by March 10.*

133801-A Sunday, March 14
5-5:30 p.m.

133801-B Thursday, March 18
10:15-10:45 a.m.

Music Together Spring Session V

These classes are a rich musical environment full of opportunities for experimentation and play, and will help your child age 1-5 grow into a confident, life-long music maker. During each online music class, your teacher will lead music activities for the whole family to sing, play and jam along to and show you how to make everyday items like dish towels, pots and stuffed animals into musical props. Class includes a CD or download of class songs, plus a songbook/storybook. Plus, participants get access to additional musical playdates and family dance parties. A link to the virtual classroom will be emailed to participants. *Register by March 19.*

133802-A Sundays, March 28-June 6 (no class April 4)
5-5:30 p.m.

133802-B Thursdays, April 1-June 3
9:15-9:45 a.m.

133802-C Thursdays, April 1-June 3
10:15-10:45 a.m.

\$189 Residents of New Hope, Crystal and Robbinsdale
\$196 Nonresidents

Kidcreate Studio



Peeps® Party

Youth ages 1 ½ to 6 with an adult, hop on over and get artistic as you create a larger than life sculpture of a marshmallow Peep. Children must be accompanied by an adult. *Register by March 18.*

133601-I Saturday, March 27
10-11 a.m.

Crystal Community Center, 4800 Douglas Drive

\$17 Residents of New Hope, Crystal and Robbinsdale
\$24 Nonresidents

Doodlebugs and Flutterbys

Did you know that 95% of all species on earth are insects? Youth ages 1 ½ - 6 along with an adult, will learn cool facts about bugs while creating beautiful butterflies, lovely ladybugs, brightly colored beetles and more. We'll explore several art methods as we create sculptures and paintings inspired by the bug of the week. Children must be accompanied by an adult. *Register by June 30.*

133601-J Wednesdays, July 7-28
6-7 p.m.

Manor Park, 3129 Abbott Ave N, Robbinsdale
\$54 Residents of New Hope, Crystal and Robbinsdale
\$61 Nonresidents

Special Events

Bike Rodeo

Mark your calendars for the Bike Rodeo!

Kids will have the opportunity to have their helmet properly fitted and navigate their bikes through a skills course. Enter the door prize drawing to win a new bike. Advanced registration required. Schedule your time by going to

webtrac.crystalmn.gov.

Thursday, May 6, at 5:45, 6:30, or 7:15 p.m.

Crystal Community Center, 4800 Douglas Drive Free!



Young Mudder

Kick off the summer by getting down and dirty at the Third Annual Young Mudder! Youth ages 6-12 will have the opportunity to run through unique obstacles that are both challenging and messy, while having a DJ on site keeping them motivated. West Metro Fire will be there to help you get washed up before heading home. Make sure to wear clothing and tennis shoes that can get dirty. Participants will run in waves during the event. A parent or guardian must be present during the event. *Register by May 24 to be guaranteed event swag items!* *Event specifics may be adjusted based on COVID-19 restrictions. Adjustments may include specific race times, group sizes and obstacle modifications.

110104-A Saturday, June 12
9 a.m.-12 p.m.

Valley Place Park, 6822 32nd Ave N, Crystal
\$25 per person

Vehicle Fair

Families are invited to see vehicles that come and go through their neighborhood. A wide variety of trucks and cars will be on display to explore. It's a great photo opportunity. A free-will donation of a non-perishable food item for the local food shelf will be accepted. Food trucks will be on site for this event. If weather is questionable, visit twitter.com/CrystalRec after 9:30 a.m. **This event was originally scheduled for June 5 but has been postponed until September.*

Saturday, September 18, 10 a.m.-12 p.m.

Crystal Community Center, 4800 Douglas Drive Free!

Vehicles Wanted!

Do you have a unique vehicle you'd like to showcase for the public at the 2021 Vehicle Fair? Contact Aaron Thelen at 763-531-5153 for more information.



City Wide Garage Sale

New Hope's Second Annual City Wide Garage Sale will be held June 18-19. Open to all New Hope residents. Sign up now to include your sale on a published map. To register, call 763-531-5151 or go to newhope.mn.gov/rec, select "Register for Garage Sale." *Register by June 10.*

Friday and Saturday, June 18 and 19
No charge to participate.





Movies in the Park

Family movies in the park! Join us for a fun summer evening showing some of your favorite new and classic movies. We'll show three movies on a jumbo screen at the new outdoor Performance Center. Concessions will be available for purchase (provided by the New Hope Dance Booster Club). Please bring your own blanket or chair. Come a little early to get your spot and participate in pre-movie activities!

New Hope Performance Center, 4401 Xylon Ave N

Free! Spaces limited based on event capacity guidelines. Please pre-register by calling 763-531-5151 or go to webtrac.nhrecexpress.com, select "Tickets."

"Big Hero 6" - Thursday, June 17



A young tech whiz named Hiro must save his city with the help of his inflatable robot Baymax, as well as his friends Go Go Tomago, Wasabi, Honey Lemon and Fred. Rated PG. Sponsored by Affinity Plus Federal Credit Union.

Movie starts approximately 9:15 p.m.

"Monsters, Inc." - Thursday, July 15

In order to power the city, monsters have to scare children so that they scream. However, the children are toxic to the monsters, and after a child gets through, two monsters realize things may not be what they think. Rated G. Sponsored by West Metro Fire Rescue Auxiliary.



Movie starts approximately 9:15 p.m.

"Black Panther" - Thursday, Aug. 19



A superhero known as Black Panther defends Wakanda, a technology-advanced country in Africa that has hidden itself away from the rest of the world. Now, he must face a dissident who wants to sell the country's natural resources to fund an uprising.

Rated PG-13. Sponsored by the New Hope Lions.

Movie starts approximately 8:30 p.m.

Music in the Park

Families, come join us for an evening of music in the park at the New Hope Performance Center! Bring a blanket or lawn chair to sit on the built-in seating or in the grass while social distancing between groups.

7-8:30 p.m.

New Hope Performance Center, 4401 Xylon Ave N (just west of the New Hope Aquatic Park)

Free! Spaces limited based on event capacity guidelines. Please pre-register by calling 763-531-5151 or go to webtrac.nhrecexpress.com, select "Tickets."

The Percolators - Wednesday, May 26

The legendary PERCOLATORS will perform refreshing "60s on up" rock, country, blues, R&B, pretty ballads, an occasional waltz or polka, and requests. They are a trio band with nice three-part harmonies. The band brings positive energy and is very engaging and fun! Sponsorship available.



The Castaways - Wednesday, June 9

THE CASTAWAYS are a nationally-known Minnesota based rock 'n' roll band. They put on a great show for all ages with lots of audience interaction, and are one of the region's top festival/fair attractions. The band features a versatile song list and plays the best hits from such artists as Bruce Springsteen, Elvis, Buddy Holly, the Beatles, Beach Boys, Motown artists, Johnny Cash, Neil Diamond and more! Sponsorship available.



Brass Menagerie - Wednesday, July 7

Brass Menagerie is a ten-piece band from Minneapolis/St. Paul. They feature a sizzling horn section with great vocals

and generations of memorable music, including swing beats of the '40s & '50s, early rock & roll, and a large assortment of tunes from the '70s, '80s & '90s through today. Sponsored by New Hope Lions.

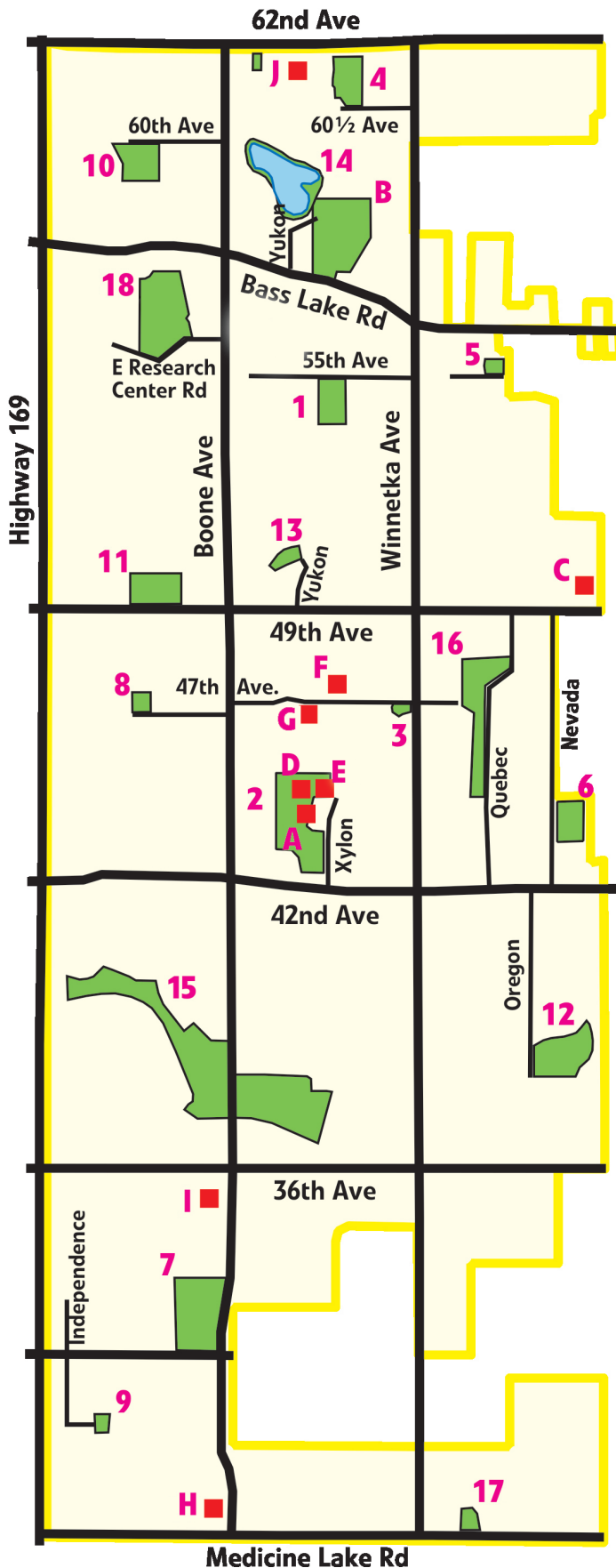


Blue Groove - Wednesday, Aug. 11



Blue Groove is a multiple award-winning bluegrass band from Minneapolis/St. Paul. The band covers a number of past and current contemporary bluegrass artists and incorporates a few originals too. Sponsored by Affinity Plus Federal Credit Union.

Parks



1.	Begin Park 5407 Wisconsin Ave
2.	Civic Center Park 4401 Xylon Ave
3.	Corner Park 4653 47th Ave
4.	Dorothy Mary Park 8030 60½ Ave
5.	Elm Grove Park 5500 Quebec Ave
6.	Fred Sims Park 4350 Nevada Ave
7.	Hidden Valley Park 8800 32nd Ave
8.	Holiday Park 9024 47th Ave
9.	Jaycee Park 3028 Independence Cir
10.	Liberty Park 9015 60th Ave
11.	Lighted Field 8810 49th Ave
12.	Lions Park 3810 Oregon Ave
13.	Little Acre Park 4948 Zealand Ave
14.	Meadow Lake Park 8400 E. Meadow
15.	Northwood Park 3815 Boone Ave
16.	Sunnyside Park 4751 Quebec Ave
17.	Terra Linda Park 2701 Lamphere Dr
18.	Victory Park 5500 International Pkwy
A.	New Hope City Hall 4401 Xylon Ave
B.	Golf Course 8130 Bass Lake Rd
C.	Ice Arena 4949 Louisiana Ave
D.	Performance Center 4401 Xylon Ave.
E.	Aquatic Park 4411 Xylon Ave
F.	Community Gyms/Cooper High 8
G.	New Hope Learning Center 8301 47
H.	Robbinsdale Spanish Immersion 8
I.	Sonnesyn Elementary 3421 Boone Av
J.	Meadow Lake Elementary 8525 62n



	Acreage	Ballfields – Multi-use	Fields – Soccer, football, lacrosse	Basketball Courts	Batting Cage	Community Rooms	Concession Stand	Disc Golf	Dog Park - Off leash	Golf – 9-hole, par 3	Grills	Gyms – Multi-use, full-size	Horseshoe Courts	Nature Area	Outdoor Pool	Parking Lot	Pathways	Performance Stage	Picnic Areas	Pickleball (Lines on tennis courts)	Play Equipment	Shelter – Enclosed	Shelter – Picnic	Skate Park	Skating Rink	Tennis Courts	Volleyball Court – Sand	Walking Track – Indoor	Water (Drinking) Fountain
	4.76	◆		◆																	◆					2L			◆
	18.23			L			◆								◆	◆	◆		◆	◆	◆		◆	◆		4L	L		◆
	0.6			◆																	◆								
	6.06													◆			◆												
	1.44																◆		◆		◆								
	5.74			◆													◆		◆		◆	◆							
	16.41		◆	◆							◆					◆	◆		◆	◆	◆	◆	*		OL	3L			◆
	1.47	◆																	◆		◆	◆						◆	
	1.32																		◆		◆								
	6.16	◆	◆	◆					◆								◆		◆		◆	◆			OL				◆
	7.57	2L	◆		◆											2	◆					◆							◆
	8.84	2		◆					◆			2				◆	◆		◆		◆	◆			OL				◆
	2.07	◆		◆													◆		◆		◆	◆							◆
Lake Rd	1.4																◆		◆		◆								
	47.41	2	◆	◆							◆		◆		2	◆			◆		◆	◆	*						◆
	10.99	◆		◆				◆								◆	◆		◆		◆								
	1.4																◆				◆	◆							◆
	8	L	L													◆	◆												◆
																◆													
							◆			◆	◆					◆			◆			◆	*						
						◆	◆									◆									2I		◆		
																◆	◆	◆											◆
230 47th Ave					◆		◆					2				◆													◆
7th Ave		◆	◆													◆					◆								
808 27th Ave		◆	◆													◆					◆								
ve		2		◆												◆	◆				◆								
nd Ave		4															◆			◆	◆					3L			◆

* - Reservable I - Indoor O - Outdoor L-Lighted



New Hope Summer Theatre

Off Broadway Musical Theatre will present *The 25th Annual Putnam County Spelling Bee* in the summer of 2021. It's the tale of six awkward youngsters vying for the spelling championship of a lifetime. They wind their way through a series of (potentially made-up) words and along the way find joy, heartache and a purpose in competing at the regional spelling bee, hoping never to hear the soul-crushing "ding" of the bell that signals a spelling mistake. American Sign Language date will be on Friday, Aug. 6 (rain make-up date is Saturday, Aug. 7).

Thursdays-Saturdays, July 22-Aug. 7
8 p.m.

New Hope Performance Center, 4401 Xylon Ave N
A free will donation of \$4 per person is suggested to help cover the cost of production. Food shelf donations for PRISM will also be accepted.

Auditions

Open auditions will be held for Off Broadway Musical Theatre's production of *The 25th Annual Putnam County Spelling Bee* in Spring 2021. Visit their website at obmt-newhope.org for details on dates and locations.

Volunteers Needed

The show must go on...but not without your help. The Off Broadway Musical Theatre is looking for volunteers, ages 16 and over, to bring *The 25th Annual Putnam County Spelling Bee* to New Hope's performance center this summer. No experience necessary! For more information call 763-592-6805 or visit obmt-newhope.org.

Golf Course Plant Sale

The New Hope Golf Course will be hosting a plant sale later this spring. Tons of perennials will be available for a nominal cost.

Saturday, May 8 from 8 a.m.-1 p.m.

Wet and Wild Water Fun Day

The cities of New Hope, Crystal and Robbinsdale, along with the West Metro Fire District, have joined together to offer this splash-splashing event. This wet and wild event will include three giant water slides, a kiddie slide and sprinkler fun provided by West Metro Fire's aerial truck. A wristband is required to participate. Note: This event will be cancelled if raining and will not be rescheduled. *Save money by registering by Aug. 2.*

Friday, August 6, 12:30-3 p.m.

Valley Place Park, 6822 32nd Ave N, Crystal

\$3 per person by Aug. 2; \$5 per person at event.

Free for ages 2 and under.



Trick or Trot & Transylvania

Save the date! Trick or Trot... and Transylvania is coming!

Youth ages 3-12 can participate in a spooky evening of trick or treating, face painting, pumpkin decorating, DJ music, costume contest, scavenger hunt, carnival games and warm refreshments. The event will be held on

Saturday, Oct. 9 from 5:30-7

p.m. at Civic Center Park. Stay afterward for a free showing of "Hotel Transylvania" at 7:30 p.m.



New Hope HeyDay

New Hope's summer festival is still in the planning stages. This day of festivities is sponsored by the New Hope Lions in cooperation with the city of New Hope. Events may include Bingo, food trucks, beverage garden, and fun and games for the whole family. For more information, please visit the New Hope HeyDay website at newhopeheyday.com.

Families



Family Activity Packs



Families can check out sports equipment, games and activities to enjoy at home or in any of our parks! Thanks to funding from Hennepin County, this equipment will be available for youth and families to try different activities. All equipment is cleaned and sanitized between uses, and packs are

available for rental for two weeks on designated dates. Craft kits are available for purchase and can be used for kids ages 3 and up with an adult. *Limited quantities available.*

Backyard Games Pack (130330)

Spikeball, washer toss, giant Jenga, horseshoe set, American Ninja Warrior obstacle course

Summer Sports Pack 1 (130310)

Football, basketball, soccer balls, frisbee, kickball, volleyball

Summer Sports Pack 2 (130311)

Pickleball set, tennis set, wiffleball set, scoop ball set

\$15 per rental kit, along with a \$50 deposit which will be refunded after equipment is returned

Craft Pack (130301)

Chalk, bubbles, paddleball paddles, blank journals, coloring books, DIY wood airplane kit, crayons, magic scratch items.

\$20 per kit to purchase

Gnome Hunt

Stay on the lookout for the gnomes that have been roaming your local parks. Each day will bring a new set of clues, leading you to their latest secret hideout. Submit your findings each day for a chance to win a recreation prize pack. This is a fun, self-paced spring break activity for the whole family! *Register by March 22.*

132101-A Monday-Friday, March 29-April 2

\$5 per household Residents of New Hope, Crystal and Robbinsdale

\$12 per household Nonresidents



Bandstand Bingo V

Join us for bingo with a cool soundtrack that will have you thinking about driving with your windows down and cranking the summer hits. In this twist on bingo, you will try to match summer hits instead of numbers. You will be told the song you are looking for, so there won't be any guessing. We'll listen to a quick snippet of a summer hit while you look on your electronic bingo cards for a match. Regular bingo rules apply. Each device login will get two bingo cards to play for each round. Winners will receive recreation prizes or gift certificates. Virtual/Zoom access will be emailed to participants. *Register by April 15.*

130501-G Friday, April 23
7-8 p.m.

\$5 per device

Family Paint in the Park

This great family activity is for ages 8 and over. Choose from a selection of paintings provided by Merry Time Arts that you'd like to paint on an 8x10 canvas. Includes step-by-step instructions. *Register by July 22.*



133501-A Saturday, July 31
10-11:30 a.m.

Becker Park, 5500 West Broadway, Crystal

\$5 per painting Residents of New Hope, Crystal and Robbinsdale

\$12 per painting Nonresidents

Funds Available

Funds are available for New Hope families who need assistance with registration fees in order for their child or teen to participate in recreation programs. Applications must be completed in person. Proof of residency is required with a valid picture ID. Families will be asked to pay half of the program fee. Not available for private lessons, competition teams, costumes, admission fees, golf league or rounds, trips or special events. For more information call 763-531-5151.



Family Storytime in the Park

All ages are welcome to enjoy these special storytimes hosted by the cities of New Hope, Crystal and Robbinsdale. Presented by Princess Party Pals. Register online at webtrac.nhrecexpress.com, select "Tickets."

10:30-11:15 a.m.

Free! Pre-registration requested.

Camping Cowgirl - Wednesday, June 16

Yeeeehaw!!! Meet the Camping Cowgirl and her toy friends, learn about treating your toys with care, and feel free to bring your own favorite small toy! The Cowgirl will also share about her favorite summer activity, camping, as we build a pretend campfire and learn a campfire song.



New Hope Performance Center,
4401 Xylon Ave N

Pirate Penny - Wednesday, July 14

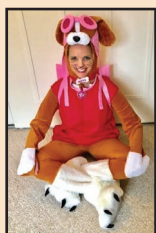


Shiver me Timbers! Enter the wonderful world of Pirates with your host Pirate Penny. Learn how Pirates dress, how they talk, how they move and how they like to have fun finding treasures! Feel free to dress up like a pirate if you wish!

Becker Park, 5530 Douglas Drive N, Crystal

Pup Patrol - Wednesday, Aug. 11

Who let the dog out?? We did, so she could lead her summer program all about Dogs! Join our flying pink pup for a fun program about her five best dog friends who help keep the city safe, recycle, dig, put out fires and swim. Sing songs, learn about dog care, discover dog breeds, practice colors and of course, learn the Doggy Dance.



Lakeview Terrace Park
3769 Crystal Lake Blvd, Robbinsdale

Due to COVID-19 programs, classes and events may be modified. Staff will continue monitoring guidelines from the CDC, MDH and MN Governor. Participants will be notified of any changes before programs start.

New Hope Farmer's Market

The New Hope Farmer's Market is held every Saturday from June 19 to Oct. 2, including Labor Day weekend. The farmer's market will be located at 4401 Xylon Ave. A section of Xylon Avenue will be closed to traffic to accommodate the market. The market will be open from 9 a.m. to 1 p.m. For more information visit newhopemarket.org or facebook.com/newhopefarmersmarket.

Step To It Challenge (May 1-28)

Build healthy habits by tracking your activity through the Step To It Challenge, a fun, free



program that encourages people of all ages and abilities to become more active. Join the challenge on behalf of your community, school, workplace or group home, and compete against other Hennepin County cities. The challenge is not just about walking. Convert a variety of activities into steps, including running, cycling, dancing, manual wheelchair use and many others. Registration opens on April 1 at step toit.org (no fee to participate). T-shirts are available (while supplies last) at the Parks and Recreation office starting April 1.

Minnesota Starwatch Program

Bring your family, grab your lawn chair and join WCCO's Mike Lynch as we view the late summer sky featuring Jupiter and Saturn! Anyone ages 5 and older are welcome (ages 5-17 must be accompanied by an adult). We will start the evening with an orientation and an out of this world snack, followed by a time exploring the galaxies with large reflective telescopes! Mike Lynch has been a meteorologist and broadcaster at WCCO radio for over 40 years and has been hosting star watching programs for over 45 years. Even if it's cloudy everyone will still have fun, learn a lot and receive a handout package with maps and constellations. Purchase tickets online at webtrac.nhrecexpress.com, select Tickets. Register by Aug. 19.

Thursday, Aug. 26, 8-10 p.m.

New Hope Performance Center, 4401 Xylon Ave N
\$13 per person



Adults



Pickleball Lessons

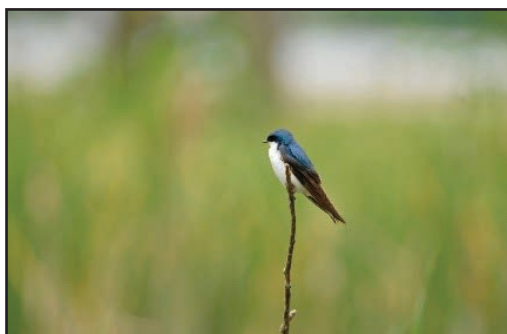
Would you like to try Pickleball? It's a game played on a court similar to a tennis court, where players hit a whiffle ball with a paddle that is slightly bigger than a ping-pong paddle. Learn the skills and rules of this fun sport for two to four players and find out why Pickleball is currently the fastest-growing sport in America. Equipment provided.

321502-B Wednesdays, April 14-May 19
7-8 p.m.

Civic Center Park, 4401 Xylon Ave N
\$65 Residents of New Hope
\$72 Nonresidents

Three Rivers Explorer Series

Providing outdoor, nature-focused experiences for ages 18 and older. *New Hope, Brooklyn Center, Crystal and Robbinsdale receive resident rate. *Registration deadline is two weeks prior to the session.*



Birding

Take a hike with a naturalist and discover what birds are busy using the park.

121101-B Thursday, May 20
6-8 p.m.

Crystal MAC Wildlife Area
6001 Regent Ave N, Crystal
\$15 Residents*
\$22 Nonresidents

Biking - Get to Know Your Regional Trails

Let's explore the trails! Discover new locations and connections. Use a provided bike or bring your own.

121101-A Thursday, June 17
6-8 p.m.

Bassett Creek Park, 3195 Welcome Ave N, Crystal
\$15 Residents*
\$22 Nonresidents

Stand Up Paddleboarding

Try the fast-growing sport of stand up paddleboarding and discover a new way to explore the water. Paddleboards provided.

121101-E1 Tuesday, July 13
121101-E2 Thursday, July 15
6-8 p.m.

Fish Lake Regional Park
14900 Bass Lake Road, Maple Grove
\$20 Residents*
\$27 Nonresidents



Archery

Try your skills at archery! We'll learn techniques and also play a few games. All equipment provided.

121101-D Thursday, Aug. 19
6-8 p.m.

Robbinsdale Middle School (south fields)
3730 Toledo Ave N
\$15 Residents*
\$22 Nonresidents

Kayaking

Our adventure will begin on Cedar Lake where we will paddle to Lake of the Isles and Lake Calhoun/Bde Maka Ska. We'll stop for a box lunch before paddling back. Instruction and guide provided by Active Solutions. Open to all abilities. Must be under 6'2" and 225 pounds. Fee includes instruction, solo kayaks, paddles, life jackets, guide, and lunch. *Registration deadline is one week prior.*

121102-A Tuesday, June 1
121102-B Tuesday, Aug. 3
11:15 a.m.-1:30 p.m.

Meet at Cedar Point Beach on Cedar Lake,
2101 Cedar Lake Parkway, Minneapolis
\$40 per person



Enjoy Beer/Wine and a barbeque at this 21+ class as you create a spectacular "On the Greens" painting on a 16" x 20" canvas. Our instructor from Merry Time Arts will guide you with step-by-step instructions.

120204-A Friday, Aug. 20

New Hope Golf Course, 8130 Bass Lake Road
\$38 Residents of New Hope, Crystal and Robbinsdale
\$45 Nonresidents



Take control of the situation with basic self-defense moves that are easy to remember. Learn escapes, kicks and strikes that really work, as well as what to do and say when in a compromised situation. Class is taught by Master Tom Malone and is for women ages 13 and up. *Register by July 16.*

9-11 a.m.

New Hope Ice Arena, 4949 Louisiana Ave N
\$39 Residents of New Hope, Crystal and Robbinsdale
\$46 Nonresidents



It seems that some financial topic is in the headlines every day. Should those headlines influence your decisions around your financial strategy? This workshop will help attendees use economic data to make wise decisions about their money. Learn how financial planning services work and how we can help you. Class is taught by a financial advisor with Thrivent Financial. No products will be sold in this class. A link to the Zoom virtual classroom will be emailed to participants.

Monday, March 15

120206-A2 6-7 p.m.

\$12 Nonresidents



At Thrivent's College Planning Strategies Workshop, we'll teach you everything you need to know to plan and pay for college, strategize legacy planning to pay for college, learn how academics, admissions and financial strategies work together to help save you money and avoid excessive student debt. Class is taught by a Financial Advisor with Thrivent Financial. No products will be sold in this class. A link to the Zoom virtual classroom will be emailed to participants. *Register by June 10.*

120206-B2 6-7 p.m.

\$12 Nonresidents



Is Saturday the day you set aside to play golf, spend time with your grandkids or enjoy your hobby? In retirement, every day can be like Saturday. That's a lot of time to fill and it's important to have a plan. A financial advisor from Thrivent Financial will help you formulate a plan to make the most of your retirement. No products will be sold in this class. A link to the Zoom virtual classroom will be emailed to participants. *Register by June 17.*

120206-C2 6-7 p.m.

\$12 Nonresidents





Identity Theft V

Every two seconds, someone becomes a victim of identity fraud. It can put finances and credit ratings at risk – and that's just the beginning. This discussion will help participants learn how identity theft can occur, how to take steps to prevent it, and what to do if their identity is stolen. This class is taught by a financial advisor with Thrivent Financial. No products will be sold in this class. A link to the Zoom virtual classroom will be emailed to participants. *Register by April 15.*

Monday, April 19

120207-A1 12-1 p.m.

120207-A2 6-7 p.m.

\$5 New Hope residents

\$12 Nonresidents

Heart to Heart - Conversations Around Aging V

Aging and the changes that come with the need for additional caregiving can have a significant impact on your finances as well as family relationships. This workshop reviews the considerations in planning for changes that arise as we age and provides tips for starting healthy conversations. Class is taught by a financial advisor with Thrivent Financial. No products will be sold in this class. A link to the Zoom virtual classroom will be emailed to participants. *Register by May 13.*

Monday, May 17

120208-A1 12-1 p.m.

120208-A2 6-7 p.m.

\$5 New Hope residents

\$12 Nonresidents



USTA Tennis Lessons

Have fun, stay in shape and meet new friends while playing the lifetime sport of tennis! Beginner classes are for those with little or no tennis experience. Participants will learn the basic strokes and begin to rally. Advanced beginner classes are for those who know the basics. Participants will work on ball tracking, movement and consistency. Classes are taught by United States Tennis Association (USTA)-trained instructors. All participants in the Beginner class will receive a new HEAD tennis racquet. *Registration deadline is one week prior to the session.*

Wednesdays, June 2-July 7

121501-A Beginner, 6:15-7:15 p.m.

121503-A Advanced Beginner, 7:15-8:15 p.m.

Wednesdays, July 21-Aug. 25

121501-B Beginner, 6-7 p.m.

121503-B Advanced Beginner, 7-8 p.m.

Cooper High School tennis complex

8230 47th Ave N, New Hope

\$60 Residents of New Hope, Crystal and Robbinsdale

\$67 Nonresidents

Tennis Leagues

The cities of Brooklyn Center, Crystal, Golden Valley, New Hope, Plymouth, and Robbinsdale offer adult tennis leagues this summer, beginning the week of June 21. Participants may choose to play in either the Intermediate or Advanced Division. The program will consist of an 8-10 match schedule. Leagues may play matches in any one of the participating cities depending on the community that is administering your particular league. At the beginning of the season, each player will receive a match schedule, stating when and where you will play. Players are responsible for contacting their opponent if they are unable to play at the assigned time. The league champion will receive a championship t-shirt at the conclusion of the season. *Register by June 4.*

Men's Singles

121500-A Thursdays, 6-9 p.m.

\$26 per person

Women's Singles

121500-B Tuesdays, 6-9 p.m.

\$26 per person





Senior Tennis Players Club

The Senior Tennis Players Club is a group of more than 1,100 tennis enthusiasts who are 50+ and enjoy learning, playing and competing. Singles and doubles play (no partner needed) is available for all skill levels at courts throughout the Twin Cities area. The club also participates in several social functions throughout the year. Annual membership fee is \$30 per person. For more information or to join, go to seniortennismn.org

Duk Duk Duel Softball Tournament

Register your team or just come and take in some great softball at one of the largest tournaments in the state! Men's and Co-Rec teams will compete for cash prizes in this three-day tournament held the weekend of July 16-18. A bean bag tournament will also be held on Saturday, July 17. For more information or to register a team, call Cathy at 763-228-1974 or email her at hoffe12@msn.com.



Fall Softball Leagues

New Hope Parks and Recreation offers Men's Class D/E and Co-Rec Class D fall softball leagues beginning in late August. For a detailed flyer call 763-531-5151.



Defensive Driving Courses

Adults 55 years and older who complete an accident prevention course every three years are eligible for a 10 percent automobile insurance premium reduction. These courses are co-sponsored by the Minnesota Safety Council and the New Hope Police Department. You must attend the entire class to receive a certificate. No driving or testing required. Please include your drivers' license number when registering. *Advanced registration is required.*

Eight-Hour Course

120305-A Tuesdays, March 30 and April 6
5:30-9:30 p.m.

New Hope City Hall, 4401 Xylon Ave N
\$28 New Hope residents
\$35 Nonresidents

Four-Hour Refresher Course

Must have completed the eight-hour course.

120306-A Wednesday, May 19
12:30-4:30 p.m.

120306-B Tuesday, June 22
8 a.m.-12 p.m.

New Hope City Hall, 4401 Xylon Ave N
\$26 New Hope residents
\$33 Nonresidents

Due to COVID-19 programs, classes and events may be modified. Staff will continue monitoring guidelines from the CDC, MDH and MN Governor. Participants will be notified of any changes before programs start.



Golf Leagues

New Hope Village Golf Course offers a variety of adult, senior and youth leagues. Joining a golf league is a great way to enjoy the game of golf regularly. Our leagues are open to players of all abilities (emphasis on fun!) All leagues are organized play using the handicap system with special weekly events and seasonal awards. The main focus of our leagues is recreation and enjoyment! Summer leagues include:

- Seniors Leagues on Monday or Friday mornings
- Men's League on Monday evenings
- Women's Leagues on Tuesday, Wednesday or Thursday mornings
- Women's Leagues on Tuesday, Wednesday or Thursday evenings
- Couples League on Friday evenings

Our summer leagues begin the week of April 19 and run through the end of August, but you may join the league at any time. Fall leagues are also offered. To register or for more information, call 763-531-5178.

\$25 per person entry fee, plus weekly greens fees

Group Golf Lessons

Maximize your enjoyment of golf with a full range of game improvement lessons offered by an experienced golf coach. Golf's fundamental skills will be taught in a small group setting, including proper grip, stance and swing with all clubs. These lessons are great for not only the beginner golfer, but for those who want to brush up on the basics. Clubs available or you may bring your own.

Thursdays, June 10-24

121800-A Beginner, 6-7 p.m.

121800-B Beginner, 7-8 p.m.

Thursdays, July 8-22

121800-C Beginner, 6-7 p.m.

121801-A Advanced, 7-8 p.m.

New Hope Golf Course, 8130 Bass Lake Road

\$75 for three one-hour lessons

Lunchtime Video Golf Swing Analysis

Is your ball-striking inconsistent and more "practice" just isn't helping? Hint: It's probably your swing plane. Our video analysis will teach you how to have the proper swing plane in three simple steps. This blueprint, used by tour players, grooves a perfect swing plane to hit the ball longer, straighter and more consistently than ever before--and it just takes minutes! Clubs available or you may bring your own.

Friday, May 14

121802-A1 11-11:45 a.m.

121802-A2 12-12:45 p.m.

Friday, May 21

121802-B1 11-11:45 a.m.

121802-B2 12-12:45 p.m.

Friday, June 4

121802-C1 11-11:45 a.m.

121802-C2 12-12:45 p.m.

Friday, June 18

121802-D1 11-11:45 a.m.

121802-D2 12-12:45 p.m.

New Hope Golf Course, 8130 Bass Lake Road

\$20 includes hot dog, chips and pop



Author Series V

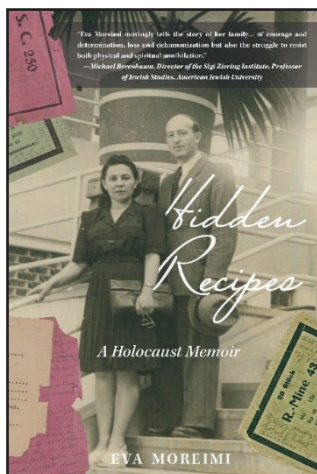
The cities of New Hope, Brooklyn Center, Crystal, Robbinsdale and Robbinsdale District 281 have joined together to offer this unique program. Authors will discuss their books and share their experiences. Books will be available for purchase through the author. Call 763-531-5151 to register, or go to webtrac.nhrecexpress.com.

6:30-8 p.m.

\$3 per person

"Hidden Recipes" by Eva Moreimi - April 13

Before the Second World War, Ica (Elena) and Ernő (Ernest) each lived a comfortable life in Czechoslovakia, until their lives were shattered by Nazi cruelty, prejudice and devastation. *Hidden Recipes* tells the story of their will, determination and struggle to survive. Sharing stories about their lives when food was abundant before the war, Ica secretly wrote down hundreds of recipes that she and her fellow inmates shared. Join us as we listen to Eva Moreimi, daughter of Ica and Ernő, discuss her book, the unique recipes and other stories from her parents. *Register by April 12.*



320503-AP



Report an Issue

The city of New Hope is grateful to park users and neighbors who watch out for the well-being of the parks. If you see vandalism, broken equipment or other park issues that need attention, please call the parks and recreation office at 763-531-5151. If you observe destructive activity taking place in a park, please call 911 immediately.



Donut Make You Wonder

Join us on the third Wednesday of the month for informative programs. Co-sponsored by the cities of New Hope, Crystal, Robbinsdale, Brooklyn Center and Senior Services of District 281. Call 763-531-5151 for program information or to register, or go to webtrac.nhrecexpress.com

10-11:30 a.m.

\$2 per person

Cuba - April 21 V

Sample the sights of this intriguing country: Old Havana, the picturesque Vinales Valley countryside, sea turtles and beaches. LeeAnn Landstrom will talk about rural and city life, culture, political structure, the tourist situation and the arts. A link to the Zoom virtual classroom will be emailed to participants. *Register by April 19.*

420502-AP



1936 Berlin Olympics - May 19



The 1936 Olympic Games held in Berlin are notorious for the tightly controlled image the Nazis presented to the world. But these games also became a blueprint for future games that is followed to this day. David Jones will share the history of the Olympics and the complicated legacy of

the 1936 Olympic Games. *Register by May 17.*

120502-MY

Becker Park Stage, 5530 Douglas Drive, Crystal



Community Tripsters

Community Tripsters is a program for adults who enjoy getting away and meeting new friends. Our trips allow you to eat at wonderful restaurants and experience a host of remarkable recreational activities. Refunds after the deadline given only if trip is canceled. Refunds prior to the deadline are subject to a \$5 service fee. Join our mailing list to receive information on upcoming trips. Call 763-531-5151.



Chocolate Tastings

Travel to Afton, MN for lunch (chicken crepes and rice pilaf) at the Afton House Inn, followed by chocolate tasting and a visit to the gift shop. The second chocolate tasting will take place at the Phipps Inn, a luxurious 1884 Victorian mansion located in Hudson, WI. Our third, and final, chocolate tasting takes place at the Outing Lodge at Pine Point, a European country home surrounded by 360 acres of wooded rolling farmland. This trip is active, including stairs and walking for up to 30 minutes at a time. *Register by April 19.*

120501-K Thursday, May 20

Depart 9:30 a.m. from New Hope Ice Arena (SE corner) 4949 Louisiana Ave N, Return about 4:45 p.m. \$88 includes transportation, tours, lunch, tax, gratuity and escort

Summertime in Faribault

Tour the Faribault Woolen Mill which dates back to the Civil War, and shop for a wide range of woven goods. Enjoy lunch (meatloaf with mashed potatoes) at the Depot Restaurant before shopping at the downtown shops in Faribault. End the day at the Aspelund Peony Gardens and Winery overlooking the Zumbro River Valley. Please note, this trip includes a 40-minute tour (wheelchairs and walkers welcome). The greenhouse and garden visits are dependent on seasonal weather conditions and may need to be substituted at short notice. *Register by May 17.*

120501-E Wednesday, June 16

Depart 8:15 a.m. from New Hope Ice Arena (SE corner) 4949 Louisiana Ave N, Return about 4:45 p.m. \$73 includes transportation, tour, lunch, tax, gratuity and escort

Padelford Riverboat Lunch Cruise

Board one of the boats in the Padelford Fleet at Harriet Island Regional Park in St. Paul, MN and take a narrated cruise along the Mississippi. Popular sights are the St. Paul High Bridge, Pigs Eye Cave, Pike Island and more. Enjoy lunch and a cash bar during this 90-minute cruise. *Register by June 14.*

120501-H Thursday, July 15

Depart 10:45 a.m. from New Hope Ice Arena (SE corner) 4949 Louisiana Ave N, Return about 3 p.m. \$89 includes transportation, boat tour, lunch, tax, gratuity and escort

Bison Herd at Minneopa Park

Travel to Mankato, MN where we will take a three-mile motor coach ride through the 330-acre Minneopa park for a chance to glimpse the bison herd. Pack your binoculars for the best view from the Seppmann Grist Mill overlook. Bison roam and therefore sightings are not guaranteed. We'll have lunch at Charley's Restaurant (special of the day with dessert and beverage) in Mankato before a stop at Jim's Candy Store on the way home. *Register by July 19.*

120501-F Thursday, Aug. 19

Depart 8:30 a.m. from New Hope Ice Arena (SE corner) 4949 Louisiana Ave N, Return about 5:15 p.m. \$79 includes transportation, tour, lunch, tax, gratuity and escort

Inspirational Art and Gardens

Meet master artist Kim Norlien of Kim Norlien Fine Art Studio in Clearwater, MN. Hear about his work while viewing the remarkable



wildlife pieces he has created, and spend time shopping at the studio. Then it's off to the Coyote Moon Grille Restaurant overlooking the Territory Golf Club in St. Cloud, where we will enjoy the special of the day. Be sure to wear durable walking shoes for a stroll through the nationally renowned Munsinger and Clemens Gardens before heading home. *Register by Aug. 16.*

120501-J Thursday, Sept. 16

Depart 8:45 a.m. from New Hope Ice Arena (SE corner) 4949 Louisiana Ave N, Return about 4 p.m. \$80 includes transportation, tour, lunch, tax, gratuity and escort

Outdoors

New Hope Performance Center

New Hope's brand new performance center is located at 4401 Xylon Ave N (just west of the New Hope Aquatic Park). The performance center will host concerts, music in the park, city programs, special events and will be home to the Off Broadway Musical Theater.



New Hope Skate Park

This tier-one skate park is suitable for skateboarders of all skill levels, including beginners. The park features an assortment of modular stainless steel ramps, grind rails, ledges and boxes on a 7,800 square foot concrete pad just west of the New Hope Aquatic Park. The skate park is free and open during park hours.



Disc Golf Course

New Hope has a disc golf course located at Sunnyside Park, 4751 Quebec Ave N. The course is free to the public and open during posted park hours. Any league play must be sanctioned by the Parks and Recreation Department. If you are interested in league play please contact us as 763-531-5151.



Off-Leash Dog Parks



Want to give your canine buddy a chance to socialize with other dogs and run in a large, safe, enclosed area? New Hope has seasonal dog parks in two city parks for just that purpose.

Off-leash dog areas are located in the hockey enclosures at the following parks:

- Lions Park, 3810 Oregon Ave N
- Liberty Park, 9015 60th Ave N

The dog parks are free and may be used during daylight hours only. Pet owners are responsible for controlling and picking up after their dogs. Dogs must remain on-leash until they enter the dog park enclosure. Read all of the rules posted at the dog park entrance. Dog parks are open from April to October (weather dependent). Call 763-531-5151 for more details.

Playground Safety

We hope you are able to safely enjoy the New Hope playgrounds! If you notice a piece of equipment needing repair or vandalism that has taken place, please call us at 763-531-5151.

Our playground provider has provided some basic safety information that is beneficial for anyone using playground equipment:

- Adult supervision is always recommended.
- Drawstrings have entangled on slides and other playground equipment causing strangulation. Remove helmets, drawstrings, scarves and other accessories around the neck prior to playing on a playground.
- Surfacing and play surfaces may become HOT and cause burns. Check for hot surfaces prior to playing on the playground.
- Wet surfaces may be slippery. Use with caution to avoid falls.





Pickleball Courts



Pickleball courts have been outlined on the tennis courts at Hidden Valley Park (8800 32nd Ave N), Civic Center Park (4401 Xylon Ave N) and Meadow

Lake School Park (8525 62nd Ave N). Pickleball combines elements of tennis, ping-pong and badminton. It's played on a court like tennis, but half the size, and uses a wiffle ball and paddles. Courts are available on a first come, first served basis unless otherwise designated. Parks and Recreation programming may preempt open play. For more information call 763-531-5155.

Drop-in Pickleball

The pickleball court at Hidden Valley Park, 8800 32nd Ave N, is available for drop-in play this summer. Grab a paddle and a friend--or come by yourself and meet up with other players. Either way, you'll have a great time playing this exciting game! All ability levels are welcome. Drop-in pickleball is available on the following days and times:

Mondays, Wednesdays and Fridays, 8-10 a.m.
Mondays, 7-9 p.m.

Corner Park Playground Improvements

Playground improvements are planned for Corner Park, located at 4653 47th Ave N. The playground at this park was last replaced in 1997 and is currently the oldest equipment in the New Hope Park system.

The project, which is scheduled to begin this spring, will involve the replacement of the playground equipment. A survey was sent to Corner Park neighbors last fall, asking for their input on new equipment. Interested neighbors were also invited to planning meetings, which were held this winter.



Thank you, Adopt-a-Park Volunteers!

The city of New Hope would like to thank the individuals and groups, listed below, for their participation in the New Hope Adopt-a-Park program.

Adopt-a-Park volunteers have assisted the city in keeping New Hope's parks clean and beautiful since 1994. Adopt-a-park activities include such things as litter pick up, flower planting and tree planting. This public service program is open to community groups, civic organizations, churches, and individuals.

If your group is interested in adopting a park, please call Shawn Markham, city forester/contract manager, at 763-592-6763.

Begin Park	Cub Scout Pack 126, Den 3
Civic Center Park	New Hope Women of Today
Corner Park	Kath Hammerseng, Edina Realty
Dorothy Mary Park	City of New Hope Employees
Elm Grove Park	Cub Scout Pack 163
Erickson Drive	Debbie, Lindsey and Jessica
Fred Sims Park	Cub Scout Pack 527
Hidden Valley Park	Fusion CEFC
Holiday Park	Available
Jaycee Park	Available
Liberty Park	Available
Lighted Athletic Complex	Crough Family & Neighbors
Lions Park	Holy Nativity Lutheran Church
Little Acre Park	Girl Scout Troop 330
Meadow Lake Park	Meadow Lake Student Council
Northwood Park	Boy Scout Troop 534
Sunnyside Park	New Hope Human Rights Commission
Terra Linda Park	Available
Victory Park	Available



Facilities

Outdoor Facilities Rental

The New Hope Parks and Recreation Department has many quality outdoor picnic and athletic facilities available for rent. Whether you are looking for a park to host a birthday party, family reunion or employee outing, we have picnic areas which would be perfect for your event. If you need space for a sporting event, we can accommodate such activities as baseball, softball, soccer, and football.

Picnic Pavilions

Northwood Park, 3815 Boone Ave N (capacity 100)
Hidden Valley Park, 8800 32nd Ave N (capacity 35)
10 a.m.-3 p.m. or 4-9 p.m.

\$88 per time slot New Hope residents/businesses

\$105 per time slot nonresidents

10 a.m.-9 p.m. (full day rate)

\$155 New Hope residents/businesses

\$189 Nonresidents

\$100 damage/compliance fee deposit required on all rentals



Warming Houses

Northwood Park, 3815 Boone Ave N (capacity 20)
Hidden Valley Park, 8800 32nd Ave N (capacity 20)
Available from 10 a.m.-9 p.m.

\$25 per hour New Hope residents/businesses

\$30 per hour nonresidents

\$15 per hour with pavilion rental (same date/time)

Due to COVID-19 programs, classes and events may be modified. Staff will continue monitoring guidelines from the CDC, MDH and MN Governor. Participants will be notified of any changes before programs start.



Tennis Courts

Begin Park, 5407 Wisconsin Ave N
Civic Center Park, 4401 Xylon Ave N
Hidden Valley Park, 8800 32nd Ave N
Meadow Lake School Park, 8525 62nd Ave N
\$23 per player for league usage rentals
\$28 per hour for special one-time event rentals

Ballfields

\$62 per game (no lights)

\$73 per game with lights

Baseball/Softball

Lighted Softball, 8810 49th Ave N
Lighted Baseball, 8810 49th Ave N
Victory Park, 5550 International Pkwy
Northwood Park (2), 3815 Boone Ave N

Soccer

Victory Park, 5550 International Pkwy
Hidden Valley Park, 8800 32nd Ave N
Lighted Field, 8810 49th Ave N
Northwood Park, 3815 Boone Ave N

Football

Lighted Field, 8810 49th Ave N





Indoor Facilities Rental - Community Gyms

The New Hope Community Gyms, 8230 47th Ave N (on the north side of Cooper High School), has two full-size basketball courts available for recreational and athletic activities. Other amenities include a batting cage, concessions area, storage rooms and restrooms. The facility is available during non-school hours for New Hope Parks and Recreation programs and for rent to the public. Whether you're looking for a place to hold your youth basketball team practice, a weekend tournament or maybe even to host a birthday party, we have just the place for you. For more information contact Steve Ellingson at 763-531-5155. *Prices are in effect through Sept. 1, 2021.*

Hourly Rental

\$60 per hour per gym for resident groups
\$66 per hour per gym for nonresident groups
\$40 per hour per gym District 281 Athletic Associations

Daily Rental (both gyms)

\$320 per gym for resident groups
\$380 per gym for nonresident groups
\$255 per gym District 281 Athletic Associations

Batting Cage

\$20 per hour (user must provide own balls and pitching machine)

Concession Stand

\$220 rental fee plus \$100 damage deposit

A resident group is a group in which at least 60 percent of the users consist of New Hope residents. A nonresident group, which includes fewer than 60 percent New Hope residents, pays a higher fee.



Interested in Teaching a Class or Program?

Go to newhopemn.gov/recreation and click on "Email Us With Your Suggestion."

Online Registration
webtrac.nhrecexpress.com



Aquatic Park

New Hope Aquatic Park, 4411 Xylon Avenue North, 763-531-5177

Get ready for New Hope's brand new aquatic park! The full facility will open for the season on Saturday, June 5, and will feature a fifty-meter, eight-lane outdoor pool with one- and three-meter diving boards, drop slide, and wibit (floatable water play). The shallow water recreation area will feature a zero depth entry, fast and slow body slides, current channel, vortex pool, tot slide and play features. The facility will also feature a special sun turf area and chaise lounge seating throughout. Additional amenities include a brand-new bathhouse and concessions area.

June 5 - Aug. 15

12-8 p.m. Monday-Friday

11 a.m.-7 p.m. Saturday & Sunday

(Closed July 16-18 for swim meet)

Aquatic Park Admission

Daily Admission:

\$10 ages 2-54

\$9 ages 55+, military

\$9 after 5 p.m. (all ages)

Coupon Book (Good for 2021 Season):

\$80 for 10 admission coupons

Season Pass (Good for 2021 Season):

Resident rate applies to New Hope, Crystal and Golden Valley residents (ages 2 and over).

Early Bird Rate (by June 4)

Resident: \$60 per person

Nonresident: \$80 per person

Regular Rate (after June 4)

Resident: \$70 per person

Nonresident: \$90 per person

Additional Information:

- Children under age 2 are free.
- Children 10 and under must be accompanied by a guardian age 15 or older.
- No food or coolers allowed. Plastic water bottles permitted.
- You must pass a swim test in order to swim in the deep end.
- Only swimwear may be worn in the pool. No t-shirts, shorts or shoes allowed.
- Tight-fitting plastic pants or swim diapers must be worn if a child is still in diapers.
- No flotation suits or toys will be allowed
- Personal Flotation Devices (PFDs) allowed for disabled swimmers. Must be Coast Guard-approved.
- Bad weather may cause the pool to close early.

Now Hiring

The New Hope Parks and Recreation department is now accepting applications for summer employment at the New Hope Aquatic Park. Positions include assistant managers, lifeguards, water safety instructors, guest services, concessions, and maintenance. Applications available at New Hope City Hall, or go to newhopemn.gov/jobs.

Party Rentals

Reserve a cabana for your child's birthday party, family gathering or work outing. Reservation includes exclusive use of cabana and option to purchase box lunches for only \$5. Maximum of 20 people. Call 763-531-5151 to make your reservation, or book online at webtrac.nhrecexpress.com, select "Facility Reservations."

\$35 12:30-3:30 p.m.

\$35 4-7 p.m.

Add-on: \$5 box lunches (payable at gate)



Lap Swimming for Adults

Monday-Friday, June 14-Aug. 13 (closed July 16)
9-11:45 a.m.

\$50 for a 10-punch pass or \$6 for a daily pass
No charge for season pass holders

Water Walking for Adults

Walk against the current channel for a fun, low impact cardio workout. Water shoes are permitted.

Monday-Friday, June 14-Aug. 13 (closed July 16, Aug. 11)
9-11:45 a.m.

\$50 for a 10-punch pass or \$6 for a daily pass
No charge for season pass holders



Swim Club

The New Hope Crystal Plymouth Swim Club provides an opportunity for boys and girls, ages 6-18, to acquire the skills for competitive swimming through professional coaching, teamwork and self-discipline. The club is sanctioned by United States Swimming and promotes good sportsmanship, fitness, fun and friendship.

Competitive swim meets are held throughout the state of Minnesota, with most in the metropolitan area. This is a year-round program with fall, winter, spring and summer sessions. Each session has a different schedule. Splash Opportunities (tryouts) are held throughout the year as well as individual assessments for team readiness and placement. For more information or to contact the head coach visit teamunify.com/mnnhcp.



Swimming Lessons

Red Cross certified swimming lessons are offered for youth ages 3-15. To ensure proper placement, every child is tested on the first day. Parents/guardians are encouraged to be present the first day of class. Evening swim lessons occur during general pool hours. Lessons are held rain or shine.

\$55 Residents of New Hope, Crystal and Golden Valley
\$62 Nonresidents

Session 1: Monday-Friday, June 14-25

Little Ones

140100-A1 11-11:30 a.m.

Levels 1, 2

140101-A1 9-9:45 a.m.

140101-A2 10-10:45 a.m.

140101-A3 11-11:45 a.m.

Level 3

140103-A1 9-9:45 a.m.

140103-A2 10-10:45 a.m.

140103-A3 11-11:45 a.m.

Level 4

140104-A1 9-9:45 a.m.

140104-A2 10-10:45 a.m.

140104-A3 11-11:45 a.m.

Level 5

140105-A1 10-10:45 a.m.

Guardstart: Lifeguarding Tomorrow

140106-A1 9-9:45 a.m.

Session 1 Evening: Monday-Friday, June 14-25

Levels 1, 2

140101-A4 5:30-6:15 p.m.

Level 3

140103-A4 5:30-6:15 p.m.

Level 2

140102-A1 6:30-7:15 p.m.

Level 4

140104-A4 6:30-7:15 p.m.

Session 2: Monday-Friday, June 28-July 9

Little Ones

140100-B1 10-10:30 a.m.

140100-B2 11-11:30 a.m.

Levels 1, 2

140101-B1 9-9:45 a.m.

140101-B2 10-10:45 a.m.

140101-B3 11-11:45 a.m.

Level 3

140103-B1 10-10:45 a.m.

140103-B2 11-11:45 a.m.

Level 4

140104-B1 10-10:45 a.m.

140104-B2 11-11:45 a.m.

Level 5

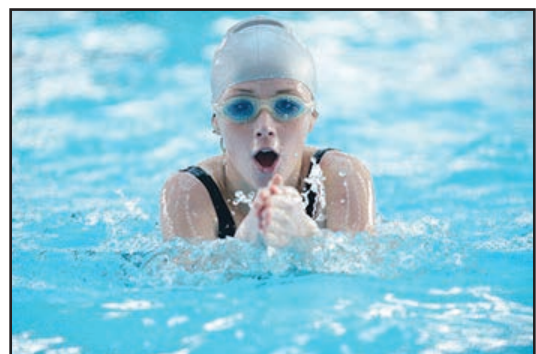
140105-B1 9-9:45 a.m.

Level 6 - Fitness Swimmer

140106-B1 9-9:45 a.m.

Level 6 - Personal Water Safety

140106-B2 9-9:45 a.m.



Swimming Lesson Skill Level Descriptions

Little Ones

This class is specially designed for children ages 3 to 4. Children must be potty trained to participate in Little Ones. Students will learn basic water skills, such as blowing bubbles, submerging their faces, paddling and floating, and become familiar with safe water practices.

Level 1 - Introduction to Water Skills

Must be 5 years or older by the first day of class. Four year olds who have passed Little Ones may register for Level 1 with instructor approval. The objective is to help students feel comfortable in the water and enjoy the water safely. Students explore simultaneous and alternating arm and leg action on the front and back. Elementary aquatic skills are taught.

Level 2 - Fundamental Aquatic Skills

Passed level 1 or equivalent. Students learn to float without support and recover to a vertical position. Students learn fundamentals of treading water, front and back glides and floats, and changing direction of travel while swimming on front or back.

Level 3 - Stroke Development

Passed level 2 or equivalent. The objective is to coordinate the front and back crawl and elementary backstroke. Students are introduced to the flutter, scissor, dolphin and breaststroke kicks, the fundamentals of treading water, and diving from the side of the pool.

Level 4 - Stroke Improvement

Passed level 3 or equivalent. Students will continue to build on the front and back crawl, elementary back stroke, breaststroke, sidestroke, butterfly, and flutter and dolphin kicks on back. Swimming under water and survival swimming will also be taught.

Level 5- Stroke Refinement

Passed level 4 or equivalent. Students will refine their skills in front crawl, back crawl, butterfly, breaststroke, sidestroke, and elementary backstroke. Flip turns on the front and back are introduced, as well as tuck and pike surface dives.

Level 6 - Fitness Swimmer

Students learn basic techniques of fitness swimming, including using a pace clock, pull buoy, fins and paddles. Students will also learn various training techniques and how to set up their own personal fitness program. This class will prepare students to participate in a competitive swimming atmosphere or as a fitness swimmer.

Level 6 - Personal Water Safety

Students will be introduced to water safety concepts including survival swimming, treading water, and situational safety topics. Students will also refine stroke mechanics and simple dives.

GuardStart: Lifeguarding Tomorrow

Passed Level 4. Students will improve their stroke mechanics, endurance and fitness level for the skills necessary to become a lifeguard, learn how to supervise others around the water, respond to rescue situations and provide basic-level first aid, and learn about leadership characteristics and skills necessary to become a lifeguard.





**Session 2 Evening: Monday-Friday,
June 28-July 9**

Levels 1, 2

140101-B4 5:30-6:15 p.m.

Level 3

140103-B3 5:30-6:15 p.m.

Level 2

140102-B1 6:30-7:15 p.m.

Level 4

140104-B3 6:30-7:15 p.m.

Session 3: Monday-Friday, July 12-23

Little Ones

140100-C1 11-11:30 a.m.

Levels 1, 2

140101-C1 9-9:45 a.m.

140101-C2 10-10:45 a.m.

140101-C3 11-11:45 a.m.

Level 3

140103-C1 9-9:45 a.m.

140103-C2 10-10:45 a.m.

140103-C3 11-11:45 a.m.

Level 4

140104-C1 9-9:45 a.m.

140104-C2 10-10:45 a.m.

140104-C3 11-11:45 a.m.

Level 5

140105-C1 10-10:45 a.m.

Guardstart: Lifeguarding Tomorrow

140106-C1 9-9:45 a.m.

**Session 3 Evening: Monday-Friday,
July 12-23 (no class July 16)**

Levels 1, 2

140101-C4 5:30-6:20 p.m.

Level 3

140103-C4 5:30-6:20 p.m.

Level 2

140102-C1 6:30-7:20 p.m.

Level 4

140104-C4 6:30-7:20 p.m.

**Session 4: Monday-Friday,
July 26-Aug. 6**

Little Ones

140100-D1 10-10:30 a.m.

140100-D2 11-11:30 a.m.

Levels 1, 2

140101-D1 9-9:45 a.m.

140101-D2 10-10:45 a.m.

140101-D3 11-11:45 a.m.

Level 3

140103-D1 10-10:45 a.m.

140103-D2 11-11:45 a.m.

Level 4

140104-D1 10-10:45 a.m.

140104-D2 11-11:45 a.m.

Level 5

140105-D1 9-9:45 a.m.

Level 6-Fitness Swimmer

140106-D1 9-9:45 a.m.

Level 6-Personal Water Safety

140106-D2 9-9:45 a.m.

**Session 4 Evening: Monday-Friday,
July 26-Aug. 6**

Levels 1, 2

140101-D4 5:30-6:15 p.m.

Level 3

140103-D4 5:30-6:15 p.m.

Level 2

140102-D1 6:30-7:15 p.m.

Level 4

140104-D3 6:30-7:15 p.m.



Lifeguard Certification Course

The American Red Cross lifeguard training and certification are imperative to the process of getting hired on as an official Red Cross lifeguard. Our detailed training includes both testing of hands-on skills as well as comprehension on written tests. The certification, which includes First Aid, CPR and AED training, is valid for two years upon completion and is accepted nationwide.

Prerequisites for lifeguard training include:

- Students must be at least 15 years old by the last day of class
- Students must pass a pre-course swimming skills test prior to taking the course

140107-A1 Saturday-Tuesday, May 29-June 1
 Saturday & Sunday, 9 a.m.-7 p.m.
 Monday & Tuesday, 4-7 p.m.

\$215 per person

Participants who work at the New Hope Aquatic Park in the summer of 2021 will receive a refund of \$175 upon completion of 50 hours worked.



Season Pass (Good for 2021 Season):

Resident rate applies to New Hope, Crystal and Golden Valley residents (ages 2 and over).

Early Bird Rate (by June 4)

Resident: \$60 per person
Nonresident: \$80 per person

Regular Rate (after June 4)

Resident: \$70 per person
Nonresident: \$90 per person

2021 New Hope Aquatic Park Pass Application

Last Name:	
Home Address:	
City:	
Email:	
Phone:	Date:
Name	Birthdate
#1:	
#2:	
#3:	
#4:	
#5:	



Golf Course

New Hope Village Golf Course, 8130 Bass Lake Road, 763-531-5178

Your New Hope Village Golf Course is a beautiful nine-hole course with a par of 27. Twenty-three acres of gently rolling terrain greet you, with large mature trees, water hazards and sand traps throughout the course. These features make New Hope Village Golf Course a great place for people of all ages and all skill levels to enjoy the game of golf. The beautiful, air-conditioned clubhouse offers a wide variety of snacks and beverages and is a great place to relax after a round of golf.

Open Golf

The golf course has plenty of opportunities for open golf. A round of golf only takes about 90 minutes. Golf carts, pull carts, and clubs are available for rental. Reservations are strongly recommended and can be made by calling 763-531-5178 or online at newhopegolf.org.

2021 Greens Fees

Adults	\$15
Seniors	\$13
Juniors	\$9.50

Punch cards and pass books are also available with reduced greens fees.

Season Golf Pass

Adult New Hope Resident	\$285
Adult Nonresident	\$355
Senior	\$325
Junior	\$160
Family	\$500

For Information on...

Adult golf leagues and lessons - page 33

Youth golf leagues and lessons - page 5

Group Outings/Picnic Pavilion

New Hope Village Golf Course is the perfect course to hold your next company, family or group outing. Since the golf course is designed for all levels of skill, everyone will be able to play and not feel intimidated. A great feature that is available for your outing is the picnic pavilion. The pavilion is covered, with gas grills available for your use. Restrooms are conveniently located nearby.

Call 763-531-5178 to book your outing today.

Clubhouse Rental

The clubhouse is available for family gatherings, business meetings, baby and bridal showers, birthday and anniversary parties, and more. Rentals are available from November through the end of March. Call 763-531-5178 for more information.

Re-Grip Your Clubs!

Have your old clubs lost their grip? Get them re-gripped at the New Hope Golf Course! Prices start at just \$5 per club. Call 763-531-5178 for details.



Registration

Registration Begins Immediately

In person...4401 Xylon Avenue North

Monday-Friday, 8 a.m.-4:30 p.m.

By phone...763-531-5151

Register by phone with a major credit card.

Online...

24-hours a day, seven days a week at
webtrac.nhrecexpress.com

Mail registration and payment...

New Hope Parks and Recreation
4401 Xylon Avenue North
New Hope, MN 55428



Online Registration **webtrac.nhrecexpress.com**



Please Remember

- Registration must be accompanied by fee payment.
- Make checks payable to: City of New Hope
- Payment by check authorizes the city to use information from your check to make a one-time electronic fund transfer from your account.
- Weather Cancellations: Occasionally classes are cancelled due to weather. Call the Weather Cancellation Line at 763-531-5158 for information regarding weather cancellations
- Refunds: Refunds, program credits and transfers are allowed up to one week prior to the start of the program or by the printed deadline. In the event of illness or injury, refunds may be given when accompanied by a doctor's written verification. Refund amount is dependent upon program and supplies involved. All refunds are subject to a \$5 service fee. No refunds for trips or tickets after the deadline.
- Classes missed by participants will not be made up.
- Sorry, exceptions for ages cannot be made. All youth programs are designed to be age-appropriate. Participant must be of the appropriate age/grade by the start of the class (unless otherwise specified). Birth certificate may be requested and, if so, must be provided.
- Confirmations are not sent. If you do not hear from us, the participant should attend on the first date listed.
- A \$30 fee will be charged to cover administrative costs for checks returned to the city.
- Funds Available: Funds are available for New Hope families who need assistance with registration fees in order for their child or teen to participate in recreation programs of an instructional nature. Applications must be completed in person. Proof of residency is required with a valid picture ID. Families will be asked to pay half of the program fee. Not eligible on private lessons, competition teams, costumes, trips and special events. For more information call 763-531-5151.



New Hope Parks and Recreation Department 4401 Xylon Avenue North, New Hope, MN 55428 Program Registration			
Name:			
Address:			
Birthdate:	Age:	Grade:	Sex: M <input type="checkbox"/> F <input type="checkbox"/>
Email:			
Phone (H):		(C):	
Activity:			Fee Enclosed:
Course Number:		Location:	
Date(s):		Time:	
Any Special Needs?			
Parent's Name (if under age 18):			
<small>I, the undersigned parent, guardian or adult participant, authorize the city of New Hope to disclose to the city's insurer, attorney, staff, coaches, and other personnel involved in this program, the participant's name, address and telephone number for the purpose of program administration. I understand that the records are protected under state and federal privacy regulations and cannot be disclosed without my written consent unless otherwise provided by law. I hereby agree to allow the individual named herein to participate in the aforementioned activity, and further agree to hold the city harmless for any claim resulting from participation in this activity. I further give consent for any photos or videos taken during the program to be used by the city in promotional materials.</small>			
Parent/Participant Signature:			
Credit Card:		Exp Date:	Security Code:

New Hope Parks and Recreation Department 4401 Xylon Avenue North, New Hope, MN 55428 Program Registration			
Name:			
Address:			
Birthdate:	Age:	Grade:	Sex: M <input type="checkbox"/> F <input type="checkbox"/>
Email:			
Phone (H):		(C):	
Activity:			Fee Enclosed:
Course Number:		Location:	
Date(s):		Time:	
Any Special Needs?			
Parent's Name (if under age 18):			
<small>I, the undersigned parent, guardian or adult participant, authorize the city of New Hope to disclose to the city's insurer, attorney, staff, coaches, and other personnel involved in this program, the participant's name, address and telephone number for the purpose of program administration. I understand that the records are protected under state and federal privacy regulations and cannot be disclosed without my written consent unless otherwise provided by law. I hereby agree to allow the individual named herein to participate in the aforementioned activity, and further agree to hold the city harmless for any claim resulting from participation in this activity. I further give consent for any photos or videos taken during the program to be used by the city in promotional materials.</small>			
Parent/Participant Signature:			
Credit Card:		Exp Date:	Security Code:



City of New Hope

A great place to grow!

4401 Xylon Avenue North
New Hope, MN 55428

Prsrt Std
U.S. Postage

PAID

Twin Cities, MN
Permit No. 2330

INCLUSION

Inclusion and Adaptive Recreation Inclusions

Reach For Resources: 952-200-3030

Reach for Resources provides inclusion facilitators for children and adults with disabilities who would like to participate in New Hope Parks and Recreation programs. Registrations for these programs are done through the Parks and Recreation department. If you would like inclusion services, please indicate when registering. A questionnaire will then be emailed/mailed to you. Upon return of the questionnaire, staff will contact REACH to set up your inclusion. A minimum of two weeks is requested for a successful inclusion.

Adaptive Recreation Resources

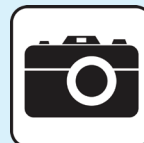
Windows of Opportunity: 763-504-6999

Windows of Opportunity is a program of the Robbinsdale School District #281 and provides recreation, education, and support for people with disabilities ages 16 and up.



Smile!

The city of New Hope sometimes takes photos and video of recreation programs and uses those images in promotional materials.



Due to COVID-19 programs, classes and events may be modified. Staff will continue monitoring guidelines from the CDC, MDH and MN Governor. Participants will be notified of any changes before programs start.

Gift Certificates Available

Looking for a gift for someone special but don't know what to get? The New Hope Parks and Recreation Department offers gift certificates in any amount. Gift certificates can be used for any recreation program, open skating, or a round of golf. For more information or to purchase a certificate, call 763-531-5151.

Online Registration
webtrac.nhrecexpress.com

